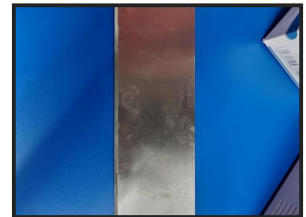


# A55 HIRE RIDE ON TILE REMOVER BMS220ADB



9. Technical data	
<b>BMS-220ADB</b>	
Working width	900mm (maximum clearance of type of floor)
Motor power	4.0kW
Battery power	12x 30 batteries / Running time up to 10 hours
Stripper/buffer speed	Electrical / up to 20 strokes
Machine type	Ride on
Application	Traditional (porcelain / ceramic / porcelain / stone / granite / marble / gips / stone etc.)
Length	855 mm
Width	1200 mm
Height	1200 mm
Weight	1080/960 kg

Design and specifications are subject to change without notice by Blastrac B.V.



**Weekly Hire: £980.00**

This all-day battery ride-on tile remover can be used for up to 8 hours per day on a fully charged battery and with its onboard battery charger can be quickly recharged via 240v socket...Large non-mark tires make it easy to ride over the surface during use, &nbsp;It can easily fit through most doors as less than 700mm wide and only just over 1080kgs in weight .&nbsp;Weights are removed for use in lifts taking the weight down to&nbsp;960kgs,&nbsp; simply just undo the lock nut with the adjustable supplied and lift the...

## Product Details

Category/Type	TILE STRIPPERS
Make	A55 HIRE RIDE ON TILE REMOVER
Model	BMS220ADB
Power	36V BATTERY
Weight	1080KGS/960KGS W/OUT WEIGHTS

Units 1 to 4, Park Road Ind Est, Risca, NP11 6PU

Tel: 01633 619129

www.wh-surfacepreparation.co.uk whsurface@gmail.com