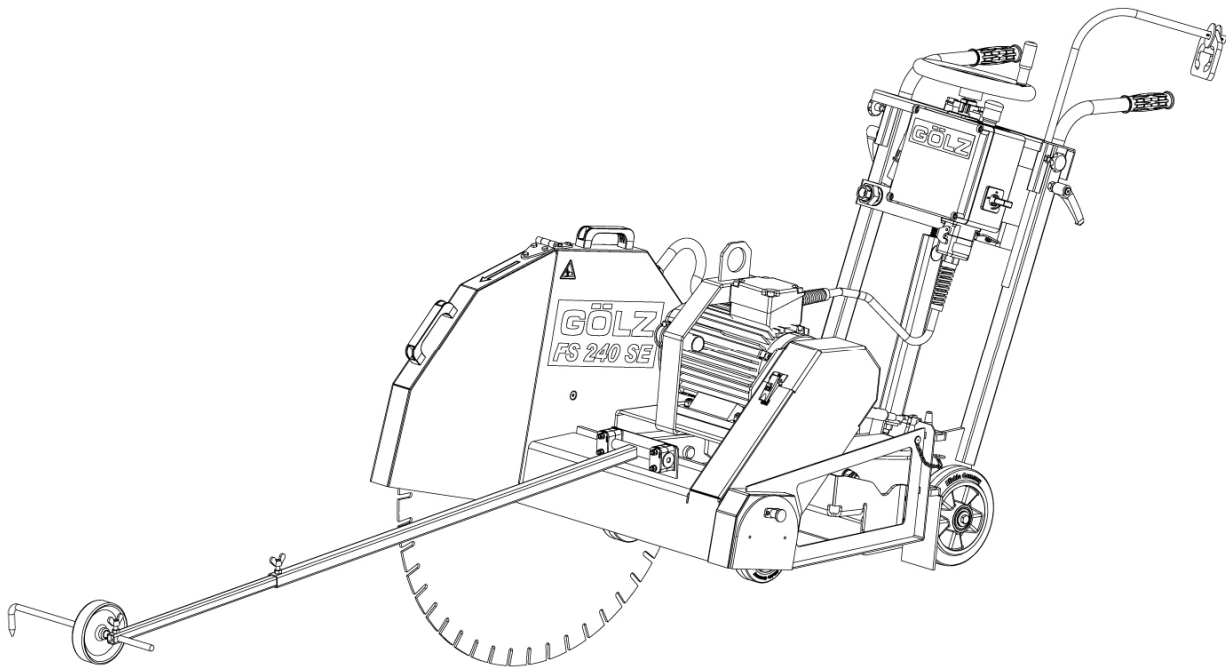


Floor saw

FS 240 SE



Art.-Nr. der Bedienungsanleitung:
ZN der Bedienungsanleitung:
Erstellt am:
Erstellt von:
Datei:

02822410998
5006580-00
04 / 2012
Julia Großbart
K:\KDV\5006xxx\5006580-Bedienungsanleitung\
5006580-00-Bedienungsanleitung-doc.doc

GÖLZ GmbH
Dommersbach 51
53940 Hellenthal-Blumenthal
Telefon: (02482) 120
Telefax: (02482) 12135

EG-KONFORMITÄTSERKLÄRUNG
 EC-DECLARATION OF CONFORMITY
 DECLARATION DE CONFORMITE DE LA CE



Die Firma



Manufacturer



La Société

GÖLZ GmbH

Dommersbach 51, 53940 Hellenthal - Blumenthal
Tel.: (02482) 120 Fax: (02482) 12135

Erklärt in alleiniger Verantwortung, dass folgendes Produkt:

Hereby certifies on it's sole responsibility that the following product:

Déclare sous sa seule responsabilité que le produit suivant:

FS 240 SE
Fugenschneider

FS 240 SE
Floor saw

FS 240 SE
Scie de sol

Seriennummer / Serial number / Numéro de série: _____

Auf das sich diese Erklärung bezieht, mit folgenden Richtlinien bzw. Normen übereinstimmt:

Which is explicitly referred to by this declaration meet the following directives and standard(s):

Qui fait l'objet de la présente déclaration correspond aux directives et normes suivantes:

Maschinenrichtlinie 2006/42/EG
Sicherheits- und Gesundheitsanforderung

Directive 2006/42/EC
Safety and health requirement

Directive 2006/42/CE
Prescriptions sanitaire et sécurité

EMV-Richtlinie 2004/108/EG
Elektromagnetische Verträglichkeit

Directive 2004/108/EC
Electromagnetic compatibility

Directive 2004/108/CE
Compatibilité électromagnétique

Richtlinie 2000/14/EG
Geräuschrictlinie

Directive 2000/14/EC
Noise emission

Directive 2000/14/CE
Émission de bruit

Europäische Normen
EN 13862:2001
EN 13309:2000
EN 61000
DIN EN ISO 3744

European Standard
EN 13862:2001
EN 13309:2000
EN 61000
DIN EN ISO 3744

Norme européenne
EN 13862:2001
EN 13309:2000
EN 61000
DIN EN ISO 3744

Die oben genannte Firma hält Dokumentationen als Nachweis der Erfüllung der Sicherheitsziele und die wesentlichen Schutzanforderungen zur Einsicht bereit.

Documented evidence conforming with the requirements of the Directive is kept available for inspection at the above Manufacturer's, address.

Pour faire foi de la conformité et du respect des règles de sécurité, la documentation peut être consultée au siège de la Société susmentionnée.



Blumenthal, den 18.04.2012

.....
Geschäftsleitung J. Götz

Contents

1. Preface.....	4
2. General safety references.....	4
2.1 Basic operation and designated use of the machine.....	5
2.2 Organizational measures	5
2.3 Selection and qualification of person	6
2.4 Normal operation of the machine.....	6
2.5 Special work related to the maintenance and repair of the machine	7
2.6 Information about special risks electrical energy	8
2.7 Noise.....	8
2.8 Oils, greases and other chemical substances.....	8
2.9 Changing the location of the machine.....	9
3. Description	10
3.1 Main parts	10
3.2 Technical data	10
3.3 Safety devices	11
4. Transport.....	12
4.1 Transport.....	12
4.2 Storing.....	13
4.3 Bracket	13
5. Installation	14
5.1 Mounting the blade	15
5.2 Water supply.....	16
5.3 Adjusting and operating elements	17
5.4 Electric power supply.....	17
5.5 Cutting operation	17
6. Maintenance.....	19
6.1 General.....	19
6.2 V-belts	19
6.3 Maintenance plan	20
7. Troubleshooting.....	21
8. Wearing parts	23
9. Spare parts list.....	24
10. Wiring diagram	47

1. Preface

Thanks for choosing a GÖLZ-product. This operating instruction is designed to familiarize the user with the machine and its designated use.

The operating instruction contains important information on how to operate the machine safely, properly and most efficiently. Observing these instructions helps to avoid danger, to reduce repair costs and downtimes and to increase the reliability and life of the machine. The operating instruction is to be supplemented by the respective national rules and regulations for accident prevention and environmental protection. The operating instruction must always be available wherever the machine is in use. This operating instruction must be read and applied by any person in charge of work with or on the machine, such as:

- **Operation** including setting up, troubleshooting in the course of work, evacuation care and disposal of fuels and consumables.
- **Maintenance** (servicing, inspection, repair) and/or
- **Transport**

In addition to the operating instructions and to the mandatory rules and regulations for accident prevention and environment protection of the country and place of use of the machine, the generally recognized technical rules for safe and proper working conditions and procedures must also be observed.

2. General safety references



Augenschutz tragen!
Wear safety glasses!
Port de lunettes!



Schutzhandschuhe tragen!
Wear protective gloves!
Gants obligatoires!



Warnung vor allgemeiner Gefahr!
General danger!
Attention danger particulier!



Schutzhelm tragen!
Wear safety helmet!
Port du casque!



Schutzkleidung tragen!
Wear safety clothes!
Vêtements protecteurs obligatoires!



Warnung vor elektrischer Spannung!
Electrical Hazard!
Attention tension électrique!



Gehörschutz tragen!
Wear ear muffs!
Protection acoustique obligatoire



Schutzschuhe tragen!
Wear safety boots!
Chaussures de sécurité obligatoires



Achtung, Schneidgefahr!
Danger exist to cut oneself!
Attention danger de coupure!



Staubschutz tragen!
Wear dust protection!
Port de masque!



Nicht berühren!
Never touch!
Ne pas toucher!



Achtung, Schneidgefahr!
Danger exist to cut oneself!
Attention danger de coupure!



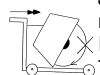
Vor Inbetriebnahme Betriebsanleitung lesen!
Read owner's manual before the first initiation!
Lire la notice avant utilisation!



Wichtiger Hinweis!
Important advice!
Indication importante!



Achtung, spielende Kinder!
Be careful with kids on the work side!
Attention aux enfants!



Jedes Umsetzen der Maschine außerhalb des Bereichs, in dem Schneidarbeiten durchgeführt werden, darf nicht mit rotierendem Werkzeug durchgeführt werden!
It is not allowed to move the machine with rotating blade outside of the area in which cutting works have to be performed!
Tout déplacement de la machine doit s'opérer sans rotation de l'outil (risque de blessures) ceci est également valable sur le chantier pour les déplacements entre coupes!

2.1 Basic operation and designated use of the machine

The machine has been built in accordance with state-of-the-art standards and the recognized safety rules. Nevertheless, its use may constitute a risk to life and limb of the user or of third parties, or cause damage to the machine and to other material property.

The machine must only be used in technically perfect condition in accordance with its designated use and the instructions set out in the operating manual, and only by safety-conscious persons who are fully aware of the risks involved in operating the machine. Any functional disorders, especially those affecting the safety of the machine, should therefore be rectified immediately.

The machine is designed exclusively for sawing of abrasive building material. Using the machine for purposes other than those mentioned above (such as for) is considered contrary to its designated use. The manufacturer cannot be held liable for any damage resulting from such use. The risk of such misuse lies entirely with the user.

Operating the machine within the limits of its designated use also involves observing the instructions set out in the operating manual and complying with the inspection and maintenance directives.

2.2 Organizational measures

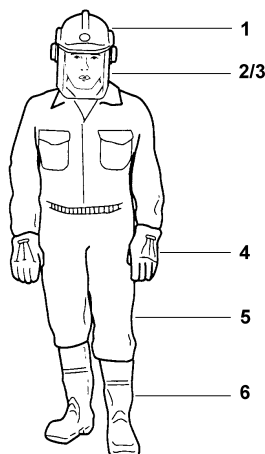
This operating manual must always be at hand at the place of use of the product and must be accessible to the person operating the machine!

In addition to this operating manual, all other generally applicable legal and other mandatory regulations relevant to accident prevention and environmental protection must be observed! Such obligations may also comprise the handling of hazardous materials, provisioning and/ or wearing of personal protective equipment, or road traffic regulations. This operating manual must be supplemented by instructions covering the duties involved in supervising and notifying special organizational features, such as job organization, work flows or the person entrusted with the work.

Person entrusted with work on the product must have read the operating manual prior to taking up work. This applies especially to persons working only occasionally on the product, e.g. during set-up or maintenance activities. Check - at least from time to time - whether the personnel are carrying out the work in compliance with the operating manual and paying attention to risks and safety-relevant factors.

For reasons of safety, long hair must be tied back or otherwise secured, garments must be close-fitting and no jewellery - including rings - may be worn. Severe injury may result from being caught by moving parts of the machine. Personal protective equipment must be used wherever required by the circumstances or by law (e.g. safety glasses, ear protectors, safety boots, suitable safety clothing). Observe the regulations for prevention of accidents! Observe all safety precautions and warnings attached to the product and always keep them in good and perfectly legible condition.

The personal protection equipment should consist of the following parts:



- 1 Helmet with protection of the ears
- 2/3 Visor or safety glasses / Dust mask
- 4 Protective gloves
- 5 Safety clothes
- 6 Safety boots

In case event of safety-relevant modifications or changes in the behaviour of the product, stop the product immediately and report the malfunction to the competent authority/ person.

Do not remove or make inoperative any safety devices the product is equipped with.

Never make any modifications, additions or conversions which might affect safety without the manufacturer's / distributor's prior approval! This also applies to the installation and adjustment of safety devices as well as to welding and drilling work on supporting structures.

Damaged or worn parts of the product must be replaced immediately. Use genuine spare parts only.

All spare parts and tools must comply with the technical requirements specified by the manufacturer/ distributor.

Adhere to the legally prescribed preventive maintenance and inspection intervals or those specified in this operating manual!

All maintenance and repair activities must be performed by qualified personnel using suitable tools and other suitable workshop equipment.

Observe the fire alarm and fire fighting measures. The personnel must be made familiar with the location and handling of fire extinguishers!

2.3 Selection and qualification of person

Any work on and with the product must be executed by reliable person only. Statutory minimum age limits must be observed!

The product must be operated or serviced by trained or properly instructed person only. Clearly define the individual responsibilities of the person for operation, set-up, maintenance and repair.

Make sure that only authorized work on or with the product.

Define the machine operator's responsibilities -also with regard to observing road traffic regulations-, providing the operator with the authority to refuse instructions by third parties that are contrary to safety.

Do not allow persons to be trained or instructed or persons taking part in a general training course to work on or with the product without being permanently supervised by an experienced person.

Work on the electrical system and equipment of the product must be carried out only by a skilled electrician or by properly instructed persons working under the supervision and guidance of a skilled electrician and in accordance with electrical engineering rules and regulations.

2.4 Normal operation of the machine

Before beginning work, familiarize yourself with the surroundings and circumstances of the site, such as obstacles which might impede work or traffic, the soil bearing capacity and the required safety measures, e.g. barriers separating the work site from public traffic.

Avoid any operational mode that might be prejudicial to safety. Check the range in gas-, water- and power supply lines before working.

Take the necessary precautions to ensure that the machine is used only when in a safe and reliable state. Operate the machine only if all protective and safety-oriented devices, such as removable safety devices, emergency shut-off, sound-proofing elements and exhausters, are in place and fully functional.

Check the machine at least once per working shift for obvious damage and defects. Report any changes to the competent person immediately. If necessary, stop the machine immediately and lock it. In the event of malfunctions or changes in the machine's behaviour, stop the product immediately and secure it against restarting. Have any defects rectified immediately!

Take precautions to ensure that the operator always has an adequate view of the work. Before leaving the machine always secure it against inadvertent movement and unauthorized use!

Cutting has to be operated wet in order to prevent the occurrence of harmful particulate matter and to increase the lifetime of the cutting tool.

During start-up and shut-down procedures always watch the indicators in accordance with the operating instructions.

Noise protection equipment on the machine has to be in protective position during operation. Wear the prescribed personal ear protection!

Avoid any operation that might be a risk to machine stability. Always keep at a distance from the edges of building pits and slopes.

The machine is designed for use in daylight! The machine operator/ owner must ensure sufficient workplace lighting for non-illuminated work sites!

Before leaving the machine always secure the machine against inadvertent movement and unauthorized use.

2.5 Special work related to the maintenance and repair of the machine

Observe the adjustment, maintenance and inspection activities and intervals set out in the operating manual, including information on the replacement of parts or assemblies! These activities may be performed by skilled personnel only.

Brief the operating personnel before initiating special repair or maintenance activities. Appoint a person to supervise such activities. In any work concerning the operation, adaptation to production requirements, conversion or adjustment of the machine and its safety-oriented devices or any work related to inspection, maintenance and repair, always observe the start-up and shut-down procedures described in the operating manual as well as the instructions on maintenance activities!

If necessary, secure a large area around the location where maintenance of the machine is to be performed. Maintenance and repair work may be carried out only if the machine is placed on level and solid ground and secured against inadvertent movement.

If the machine is completely shut down for maintenance or repair work, it must be secured against inadvertent restarting.

When using a lifting gear for replacing individual parts or large assemblies make sure that the parts/ assemblies are carefully attached to the lifting gear and secured in place to avoid hazardous conditions. Use only suitable and technically perfect lifting gear and suspension systems with adequate lifting capacity! Never work or stand under suspended loads! The fastening of loads and the instructing of crane/industrial truck operators should be entrusted to experienced persons only!

The instructor must be within sight or sound of the operator. Use an intercom system if necessary.

When carrying out overhead work always use specially designed or other safety-oriented ladders and working platforms. Never use machine parts as a climbing aid!

Wear a safety harness when performing maintenance work at greater heights! Keep all handles, steps, handrails, platforms, landings and ladders in a clean condition!

Before performing any maintenance/ repair activities clean the machine, especially the connectors and screwed joints, and remove any oil, dirt and preservative agents. Never use aggressive detergents! Use lint-free cleaning rags!

Before cleaning the machine with water or other cleaning agents cover or tape up all openings which - for safety and functional reasons- must be protected against the ingress of water/ steam/ cleaning agents. Special care must be taken with bearings, electric motors and electronic systems. After cleaning, make sure to remove all covers/ tapes from the openings.

After cleaning, check all cables for leaks, loose connections, chafe marks and damage! Have any defects found rectified immediately! Always retighten any screwed connections that have been loosened during maintenance/repair activities!

Any safety devices removed for set-up, maintenance or repair purposes must be refitted and checked immediately upon completion of the set-up, maintenance or repair work.

Avoid any operation that might affect the stability of the machine. Always keep a sufficient distance from the edges of excavations, ditches and slopes!

Before leaving the machine always secure it against inadvertent movement and unauthorized use!

Ensure that all process materials and replaced parts are disposed of safely and with minimum environmental impact!

2.6 Information about special risks electrical energy

Observe the relevant national regulations or standards. Electrical connections must always be kept free from dirt and moisture. Use only original fuses with the specified rating! Switch off the machine immediately, if trouble occurs in the electric power supply!

When working with the machine, maintain a safe distance from overhead electric lines. If work is to be carried out close to overhead lines, the working equipment must be kept well away from them. Caution, danger! Check out the prescribed safety distances.

If your machine comes into contact with a live wire:

- warn others against approaching and touching the machine
- have the live wire de-energized

Work on the electrical system or equipment may only be carried out by a skilled electrician himself or by specially instructed personnel under the control and supervision of such electrician and in accordance with the applicable engineering rules. If provided for in the regulations, the power supply to parts of machines and plants, on which inspection, maintenance and repair work is to be carried out must be cut off. Before starting work, check the de-energized parts for the presence of power and ground or short-circuit them in addition to insulating adjacent live parts and elements.

The electrical equipment of machines is to be inspected and checked at regular intervals. Defects such as loose connections or scorched cables must be rectified immediately.

Necessary work on live parts and elements must be carried out only in the presence of a second person who can cut off the power supply in case of danger by actuating the emergency shut-off or main power switch. Secure the working area with a red-and white safety chain and a warning sign. Use insulated tools only.

If mobile electrical equipment, connecting cables and/ or extension/ appliance cords with plug connectors are used, ensure that such equipment, cables and cords are checked for correct function at least once every six months by a qualified electrician or - if suitable testing equipment is available - by a properly instructed person.

Protective installations with fault-current protection units used in non-stationary equipment must be checked for correct operation at least once a month by a properly instructed person.

Fault-current and fault-voltage protection units must be checked for correct operation by actuating the testing facility:

- once on every working day in the case of mobile equipment,
- at least once every six months in the case of stationary equipment.

2.7 Noise

Noise Protection devices on the machine must be in the protection position during operation!

Always wear the specified personal hearing protection (UVV 29 §10)!

2.8 Oils, greases and other chemical substances

When handling hydraulic fluids, lubricating fluids, greases or preservatives (called operating materials and lubricants in the following), the safety regulations applicable for the respective product must be observed! Avoid prolonged contact of operating materials and lubricants with the skin!

The skin must be carefully cleaned of adhering operating materials and lubricants!

Exercise caution when handling hot operating materials and lubricants, as there is a danger of burns or scalding. Particularly at liquid temperatures above 60 °C, avoid any skin contact with these liquids!

If operating materials or lubricants get into the eyes, flush thoroughly with drinking water. Then visit a doctor! Immediately clean up any operating materials and lubricants which have leaked out. Use absorbent material for this purpose!

Operating materials or lubricants must not be allowed to seep into the soil or to get into the public sewerage system!

Properly collect, store and dispose of operating materials and lubricants which can no longer be used! Observe and follow the respective applicable laws and regulations for handling operating materials and lubricants and their disposal in the country in which these substances are used! Obtain information from the responsible agencies!

2.9 Changing the location of the machine

Use only suitable means of transport and lifting gear of sufficient capacity when loading or transporting the machine! Appoint an experienced instructor for the lifting operation!

Always observe the instructions given in the operating manual when lifting the machine (use only the prescribed lifting eyes for attaching the lifting gear)! Use only suitable transport vehicles with sufficient load capacity! Secure the load carefully. Use suitable fastening points for securing!

Before loading the machine or parts of it, secure the machine/ parts against inadvertent movement! Attach a suitable warning sign!

Before using the machine again, make sure that such protection material or devices are properly removed! Parts which had to be removed for transporting of the machine must be refitted and secured carefully before the machine is used again! Even when the transport of the machine only involves a minor relocation, disconnect it from all external power supply lines!

Before using the machine again, make sure that the connection to such external supply lines is re-established properly. The recommissioning procedure must be strictly in accordance with the operating manual! Observe the instructions given in the operating manual when reassembling and operating the machine. Before setting the machine in motion always check that all accessories are safely stowed.

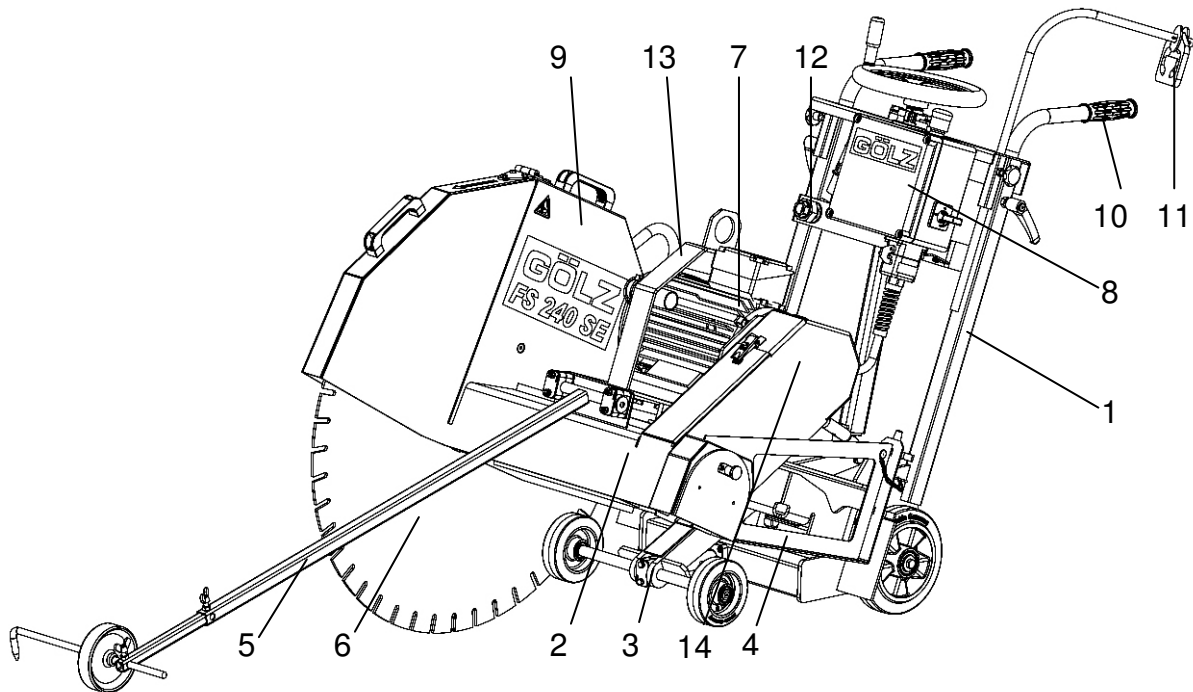


**Note that a non-fixed but mounted and standing machine will fall forward.
While carrying heavy weights, avoid stooping down.**

3. Description

Operate the machine only using tools in accordance with the manufacturer's instruction. Using other tools is considered contrary to its designated use. The manufacturer cannot be held liable for any damage resulting from such use. The risk of such misuse lies entirely with the user.

3.1 Main parts



- 1. Control panel
- 2. Chassis
- 3. Undercarriage
- 4. Flange guard
- 5. Pointer unit
- 6. Blade

- 7. Electric motor
- 8. Switch box with electrical connection
- 9. Blade guard
- 10. Connecting rod
- 11. Strain relief

- 12. Water connection
- 13. Eyebolt and Engine bracket
- 14. Blade guard pulley

3.2 Technical data

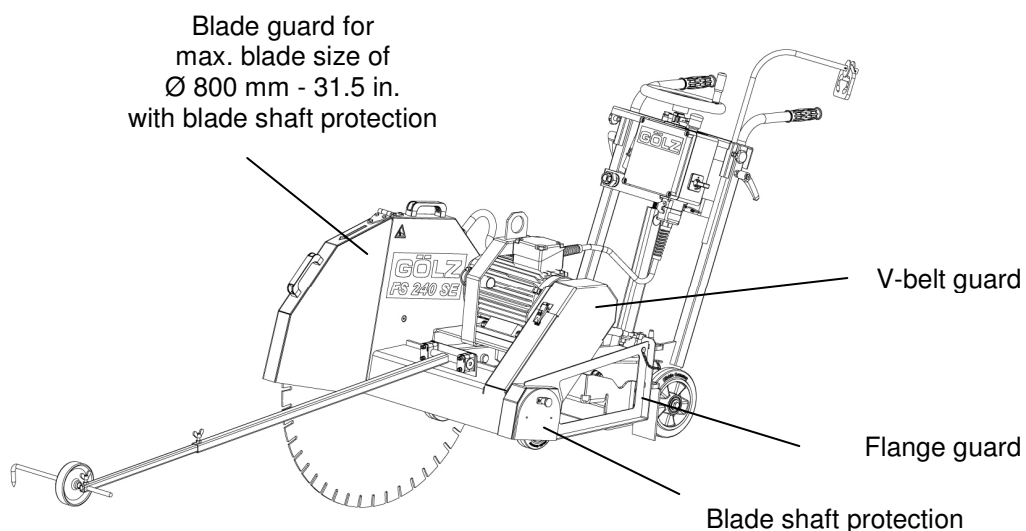
Max. cutting depth	330 mm - 13 in.
Max. blade-Ø	800 mm - 31,5 in.
Flange size	Ø 120 mm - 4,7 in.
Blade shaft size	Ø 25,4 mm - 1 in.
Engine	3-phases-motor 7,5kW (10 HP), 14,4 A

Max. cutting speed with blade	60 m/s
Engine shaft speed	2860 rpm
Blade shaft speed	1430 rpm
Feed	Manual
Excavation	Manual (hand crank)
Cutting depth control	Scale on frame
Water supply	Connection for external water supply
V-belt tension	Manual
Dimensions (L x W x H)	approx. 1650 x 733 x 989 mm - 65 x 28,9 x 178,7 in.
Weight (without water tank and blade)	ca. 187 kg - 415,5 lbs.
Sound power level after DIN ISO 6393	No load = 100 dB(A) Full load = 119 dB(A)
Sound pressure level after DIN ISO 6393	No load = 80 dB(A) Full load = 100 dB(A)
Vibration after ISO 5349 VDMA 03/2006	a = 3,7 m/s ²

3.3 Safety devices



Danger: During cutting or displacing the machine, all safety devices shown below must be mounted!



4. Transport



Danger of down coming parts!



Injury hazard: Sharp edges!

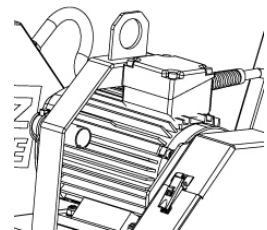
4.1 Transport

Before transport the emergency stop switch is to be pressed and the brake is to be actuated. Dismount the blade and attach again the blade guard. Lower the machine until the end stop. Check that all parts of the machine are well fastened before transporting. After loading the machine is to be secured with suitable lashing material.

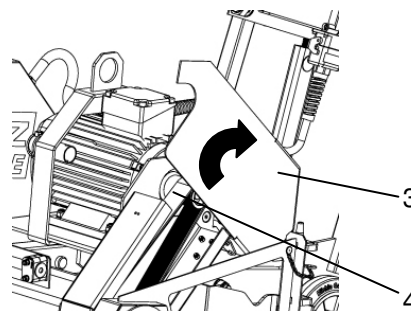
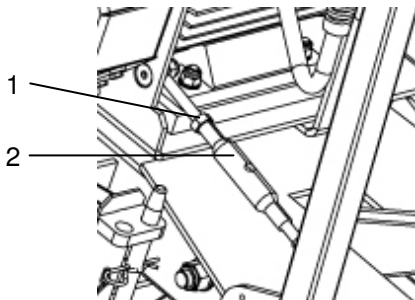
For loading only use lifting gear and tackle of sufficient capacity (Allow the kerb weight of the machine).
Lift the machine using the lifting eye.



Danger: Only use the lifting eye for lifting the machine!

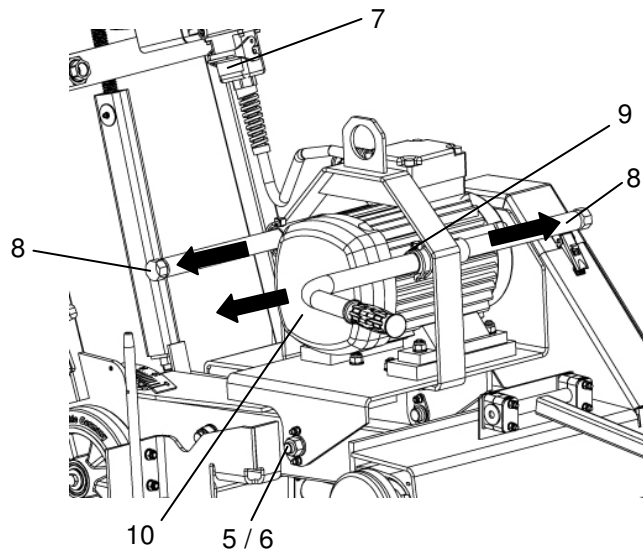


To make transport easier, the motor can be removed together with the motor bracket. Loosen the lock nut M10 (Pos.1) and turn the turnbuckle nut (Pos. 2) off. Open the V-belt protective hood (Pos. 3) in order to remove the V-belt (Pos. 4) from the V-belt pulley of the motor.



Caution: The motor bracket can tilt!

Loosen the hexagonal nut M16 (Pos. 5) and remove the washer (Pos. 6). Disconnect the motor plug (Pos. 7) from the switch box.
Position the pushing rods (Pos. 8) in the collets of the motor bracket and secure them with the pipe locking pins (Pos. 9).



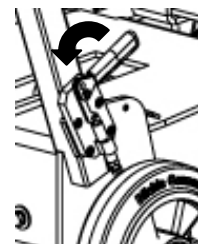
The motor (Pos. 10) can now be removed sideways from the axes over the pushing rods together with the motor bracket and be carried by two people.
For mounting, proceed in reverse order. After mounting, ensure the correct V-belt tension!

4.2 Storing

Store the machine in a dry, high or locked place, out of the reach of children or unauthorized persons.
Clean and preserve the machine with corrosion preventive if storing over a longer time like winter time!

4.3 Bracket

When the machine is not in use, the brake is to be actuated as a matter of principle.



5. Installation



Information: Unconditional observe the owner's manual of the engine manufacturer!



Danger: Never touch rotating parts like blade shaft or blade while operating!



Danger: Rotating parts may pull in clothing! Wear tightly clothing!



Danger: Down coming parts can cause injuries to the operator!!

Place the machine on an even, firm and stable ground. Have the working area well lightened. Keep the working area clean, cluttered areas invite injuries. Observe the manufacturer's information for connecting power and water supply. Lay all lines or cables that damages will be prevented.

Mount the blade to the manufacturer's odds (Observe the min. flange-Ø; use only original screws or nuts). Use only blade diameters which are allowed by the manufacturer.

The working area is reserved only for the operator. Keep unauthorized persons out of the working area. Make sure the operator always has well sight to the working area. He always has to intervene in the working process.

Never operate the machine without mounted safety devices. Check the blade is well fastened before beginning to operate. Check the correct water flow to the blade. If harmful or explosive stuffs like dust, milk-of-lime arise while cutting, observe local regulations.

If there is a risk that, during the cutting process, material particles can be accelerated outwards, wear safety goggles.



Danger: Demolition parts can cause injuries to the operator while cutting!

When travelling on public roads, ways and places always observe the valid traffic regulations and, if necessary, make sure beforehand that the machine is in a condition compatible with these regulations. After operating secure the machine against unintentional moving. If there is a risk due to increased noise exposure during the cutting process at the workplace, wear ear protection.



Danger: The sound pressure may exceed 85 dB(A)!

Appropriate to the application of the machine it could be necessary to wear further protective equipment.



Danger: Down coming parts at the building site can cause injuries to the operator!

5.1 Mounting the blade

In the cutting speed range all used blades must be designed for the max. rpm of the machine. Never use faulty or damaged blades.



Danger: Damaged cutting discs can cause serious personal injury!

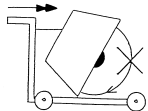


Note: Wrong direction of rotation leads to drastically increased wear of the cutting disc!



Danger: Wrong direction of rotation can result in the detachment of a segment of the cutting disc and thus cause serious personal injury!

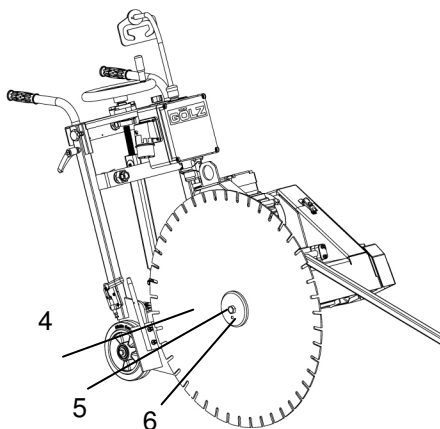
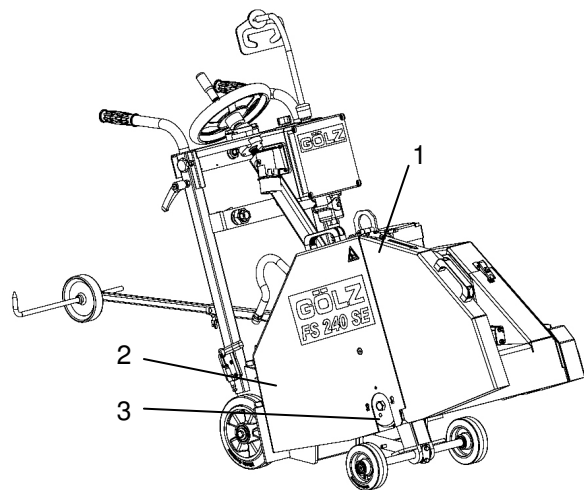
Depending on the material to be machined, the machining process and the nature of work to be carried out, use the cutting discs according to manufacturer's / supplier's specifications.



Note: Before mounting the cutting disc, thoroughly clean all the fastening elements relating to the cutting disc such as flanges, threads of the cutting shaft, screws or nuts!

Each time a cutting disc is mounted or changed, the joint cutter is to be shut down first and the emergency stop switch is to be pressed or to be disconnected from any energy source.

Pull out the spring cotter pin (Pos. 2) so that you can remove the cutting disc guard (Pos. 1) from the machine. Clean the inner flange (3) before mounting the blade.

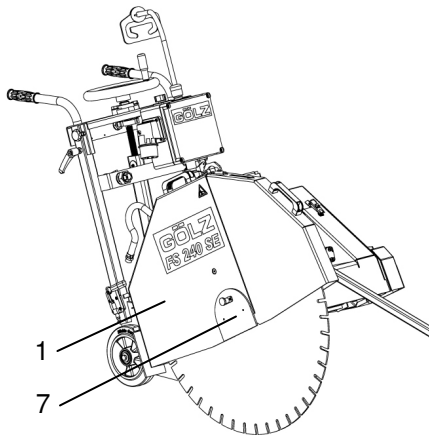


Mount the cutting disc (max. Ø 800 mm, Pos. 4) with the correct mounting holes (Ø 25.4 mm)

Make sure that the rotational direction is correct! There are directions of rotation arrows on the cutting disc guard as well as on the cutting disc itself.

Fit the outer cutting flange (Pos. 5) and secure it with screw M 16 (Pos. 6) SW 24.

In the cutting shaft, there is a left-hand thread in the direction of motion on the right; in the direction of motion on the left, there is a right-hand thread.



After mounting, fit the cutting disc guard again and fit the spring cotter pin again to its mounting hole. Make sure that the guard plate cutting shaft (Pos. 7) is in position.

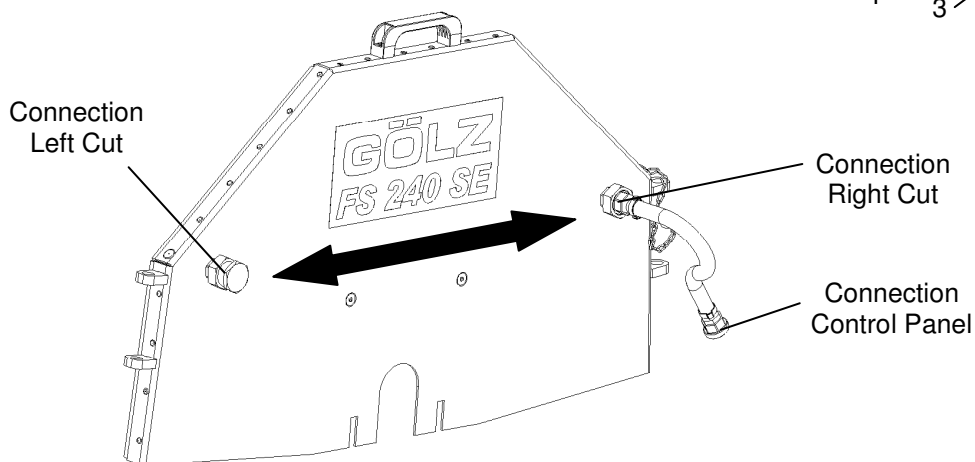
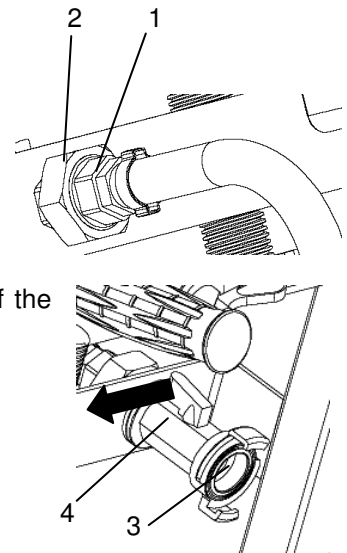
5.2 Water supply

Screw the connecting piece (Pos. 1 SW26) of the water hose of the cutting disc guard to the double nipple (Pos. 2 SW39) on the control panel.

Connect, with the help of a GEKA-coupling, the existing coupling (Pos. 3) on the right operator's side of the machine. Make sure that the mini ball valve (Pos. 4) is closed (valve lever in 90° position to the flow direction).

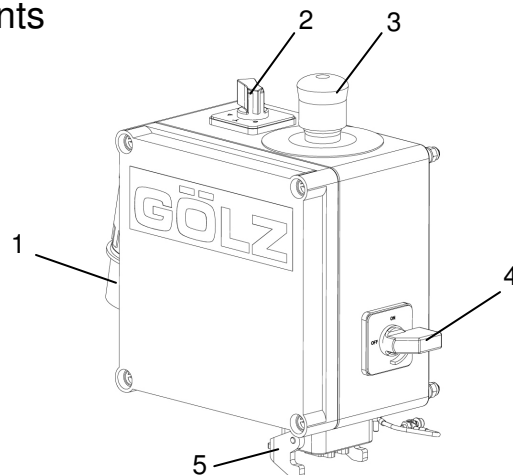
The water supply connection of the wall-flush hood is the same as the connection of the cutting disc guard.

Please note that, for left-hand or right hand cutting, the water connection of the water-flush hood is to be changed accordingly (SW39 and SW26).



5.3 Adjusting and operating elements

1. CEE-plug
2. star-delta connection switch
3. Emergency stop switch
4. Main emergency stop switch
5. Connection motor cable



5.4 Electric power supply

Ensure power-supply matches with details from motor rating-plate:

- Input voltage: V / 50 Hz,
- Fuse protection: A

The used power supply has to conform the instructions of assembly for construction site (ACS) (Error current protective circuit, who works until max. 30 mA by main error current).

Only use extension cable with protective conductor (5-wire) and adequate wire cross section (min. 4mm²). Always unwind the whole cable roller.

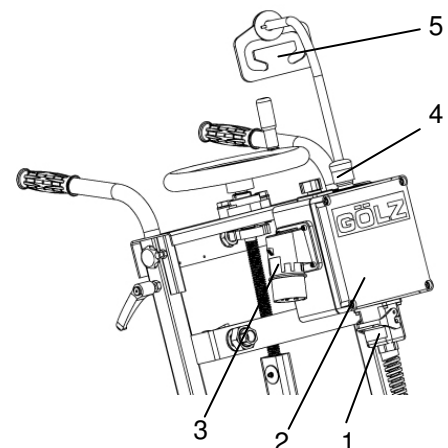
Connect the motor cable (Pos. 1) by means of the plug-in system to the switch box (Pos. 2)

Before you connect the power plug of the cable to the appliance inlet (Pos. 3) of the machine, the emergency stop switch (Pos. 4) must be pressed.

Make sure that the star-delta connection switch is turned to "0" and that the main emergency switch is turned to "Off".

After you have connected the power supply unit to the machine, the emergency stop switch (Pos. 4) is to be unlocked. Attach the cable to the strain-relief clamp (Pos. 5).

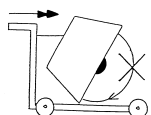
The strain-relief clamp is two-sided pluggable in the control panel and can be adjusted angularly by means of the star grip.



5.5 Cutting operation



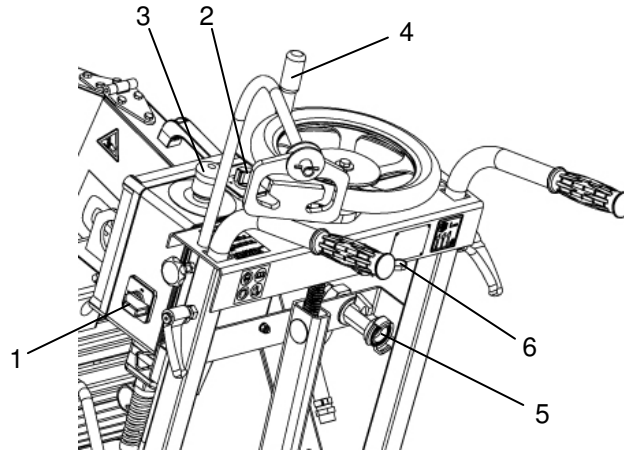
Danger: Operating with too high feed the machine might rise out of cut! In emergency situations shut down the machine immediately by pushing the emergency shut-off!



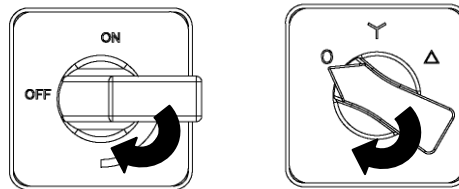
Each relocating of the machine between sawing operations has to be carried out with non-rotating cutting disc, i.e. when the drive motor is idle.

Before starting the cutting operation, the water supply is to be connected according to section 5.2 "Water Supply", the cutting disc is to be mounted according to section 5.1 "Mounting the blade" and the power supply is to be connected according to section 5.4 "Power Supply".

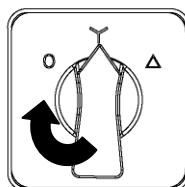
In order to ensure trouble-free motor start, raise the machine, before you start it, by means of the hand crank (Pos. 4) to such extent that the cutting disc has no soil contact.



Then turn the main emergency stop switch (Pos. 1) from "Off" to "On". To start the motor, turn the star-delta connection switch (Pos. 2) from "0" to "Star" and wait until the motor has reached its full speed.



Make sure that the rotational direction of the cutting disc is correct! As the circumstances require, the rotational direction of the drive motor is to be reversed. Turn the star-delta connection switch (Pos. 2) again to "0", press the emergency stop switch (Pos. 3) and pull off the power plug. With a suitable screwdriver, the phase inverter in the appliance inlet can be turned. Connect the power supply unit to the machine again, as described above, and start the machine again. As soon as the motor has reached its full speed and full power, the star-delta connection switch (Pos. 2) can be turned from "Star" to "Triangle".



Before you lower the machine by means of the hand crank (Pos. 4), the mini ball valve (Pos. 5) is to be opened. Lower the machine to such extent that you reach the desired cutting depth (Cutting Depth Label). Pull then the indexing plunger (Pos. 6) on the control panel, so that it snaps into the catch disk in order to fix the desired cutting depth.

Work with a steady feed pressure. Too high feed pressure leads to an overload of the motor and there is the risk that the machine loses contact with the ground. Too low feed pressure can polish the segments and make them blunt.

After the cutting operation raise the machine again by means of the hand crank (Pos. 4). Stop the water feed, turn the star-delta connection switch (Pos. 2) again to "0".

Before transporting the machine, before changing the cutting disc or doing maintenance work, the emergency stop switch (Pos. 3) is also to be pressed and the main emergency stop switch (Pos. 1) is to be turned to "Off".

6. Maintenance

6.1 General



Information: Clean the machine after every operation. Observe local environmental regulations!

For your security and for a trouble-free operation of the machine, professional care and maintenance is indispensable.

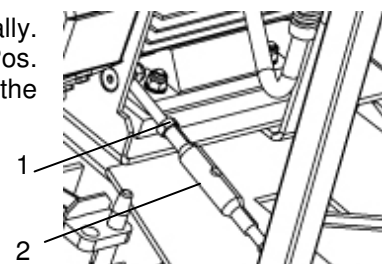
Maintenance and repair work is, as far as possible, generally to be carried out when the machine is shut down and the power plug pulled off. For maintenance jobs which must be done while the floor saw is running, the blade has to be dismantled before beginning the job. Electrical work is only to be carried out by skilled electricians.

In accordance to the given cycles, the subsequently described maintenance work has to be enforced. Also the wearing parts subject to no certain maintenance-intervals have to be checked regularly for wear and to adjust if necessary or to exchange. With I.C. engines, the maintenance work has to be enforced in accordance with the separate maintenance-instruction of the engine manufacturer.

		Before each start-up	After work	Once a week	Once a year	In case of failure	In case of damage
Complete machine	Visual inspection (condition, absence of leaks)	X				X	X
	Clean		X				
Flange and blade acceptance	Clean			X			
V-belts	Check	X		X		X	X
	Replace				X		
Water nozzle and feeding hoses	Clean		X			X	
Tools	Check	X				X	X

6.2 V-belts

The multiple V-belt and the V-belt drive are retightened manually. Loosen the counter nut M10 (Pos. 1) and turn the turnbuckle nut (Pos. 2) allowing you to tighten the motor and the multiple V-belt. Tighten the counter nut M10 (Pos. 1) again.



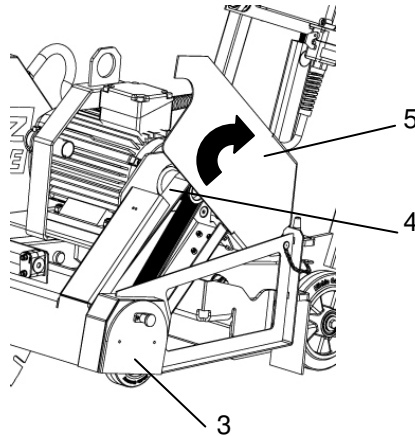
To make it easier to change the multiple V-belt, raise the machine slightly by means of the hand crank. Before you continue to work, press the emergency stop switch and pull off the power plug.

Loosen the counter nut M10 (Pos. 1) and slightly turn off the turnbuckle nut (Pos. 2) in order to remove the tension from the multiple V-belt.

Remove the flange protection (Pos. 3) and open the V-belt protective hood (Pos. 4) in order to remove the loosened multiple V-belt (Pos. 5) from the V-belt pulleys.

Position the new multiple V-belt on the V-belt pulleys and tighten it by turning the turnbuckle nut (Pos. 1) in the opposite direction until the required V-belt tension is reached. Tighten the counter nut (Pos. 2) again.

Shut the V-belt protective hood again and fit the flange protection again. If during operation, the V-belt tension decreases to such extent that there is a slip between the multiple V-belt and the V-belt pulleys, the multiple V-belt must be retightened.



6.3 Maintenance plan

1. Flange bearing of the spindle shaft: Clean from time to time, lubricate.
2. Shaft: Clean from time to time, lubricate.

7. Troubleshooting



Attention: In the event of changes in the behaviour of the machine during operation, stop the machine immediately and report the malfunction to the competent authority / person!

Problem	Cause	Remedy
Engine		
Engine does not run!	Power plug is not properly connected	Check for correct connection
	Fuses (from ACS or machine) have triggered	Check fuses
	Malfunction on electric installation	Electric installation needs to be checked by a qualified person
Lowering		
Joint cutter can neither be lowered nor be raised	Undercarriage or threaded spindle tight.	Check undercarriage and threaded spindle
Cutting		
Machine rises out of cut	Dull diamond blade	Sharpen or use softer diamond blade
	Feed too high	Reduce feed
Non circular abrasion of the diamond blade	Damaged centering of the blade shaft	Replace blade shaft
	Warped blade shaft	Replace
	Loose or damaged blade shaft bearings	Tighten or replace
Diamond blade jams in the cut	No free cut because of sideward wear-out of segments	Check hoses for fracture free laying
	Damaged diamond blade core	Replace diamond blade
Abnormal wear-out of segments	Insufficient water flow	Check hoses for fracture free laying
	Wrong type of diamond blade	Choose different diamond blade
	Feed too high	Reduce feed
	Cutting in loose underground	Reduce cutting depth
Bad cutting performance	Slippy V-belts	Adjust
	Blunt diamond blade	Sharpen or use softer diamond blade

8. Wearing parts

Wearing parts for construction devices mentioned in the operating manual such as drilling and sawing machines

Wearing parts are the parts subject to operation-related (natural) wear during proper use of the device. The wearing time cannot be uniformly defined, and differs according to the intensity of use. The wearing parts must be adjusted, maintained and, if necessary, replaced for the specific device in accordance with the manufacturer's operating manual. Operation-related wear is not a reason for defect claims.

- Feed and drive elements such as toothed racks, gearwheels, pinions, spindles, spindle nuts, spindle bearings, cables, chains, sprockets, belts
- Seals, cables, hoses, packings, connectors, couplings and switches for pneumatic, hydraulic, water, electrical and fuel systems
- Guide elements such as guide strips, guide bushes, guide rails, rollers, bearings, sliding protection supports
- Clamping elements for quick-separating systems
- Flushing head seals
- Slide and roller bearings that do not run in an oil bath
- Shaft oil seals and sealing elements
- Friction and safety clutches, braking devices
- Carbon brushes, commutators/armatures
- Easy-release rings
- Control potentiometers and manual switching elements
- Securing elements such as plugs, anchors, screws and bolts
- Fuses and lamps
- Auxiliary and operating materials
- Bowden cables
- Discs
- Diaphragms
- Spark plugs, glow plugs
- Parts of the reversing starter such as the starting rope, starting pawl, starting roller and starting spring
- Sealing brushes, rubber seals, splash protection cloths
- Filters of all kinds
- Drive rollers, deflection rollers and bandages
- Cable anti-twist elements
- Running and drive wheels
- Water pumps
- Cut-material transport rollers
- Drilling, parting and cutting tools
- Energy storage

Wearing parts of this machine are grey marked in the spare parts list.

9. Spare parts list



So bekommen Sie schnell und richtig Ihr Ersatzteil

- für Maschine - Modell - Masch.-Nr.
- Artikelnummer - Bezeichnung des Ersatzteiles
- Anzahl der gewünschten Ersatzteile
- Wohin liefern?
- Womit liefern (Post, Eilpost etc.)?



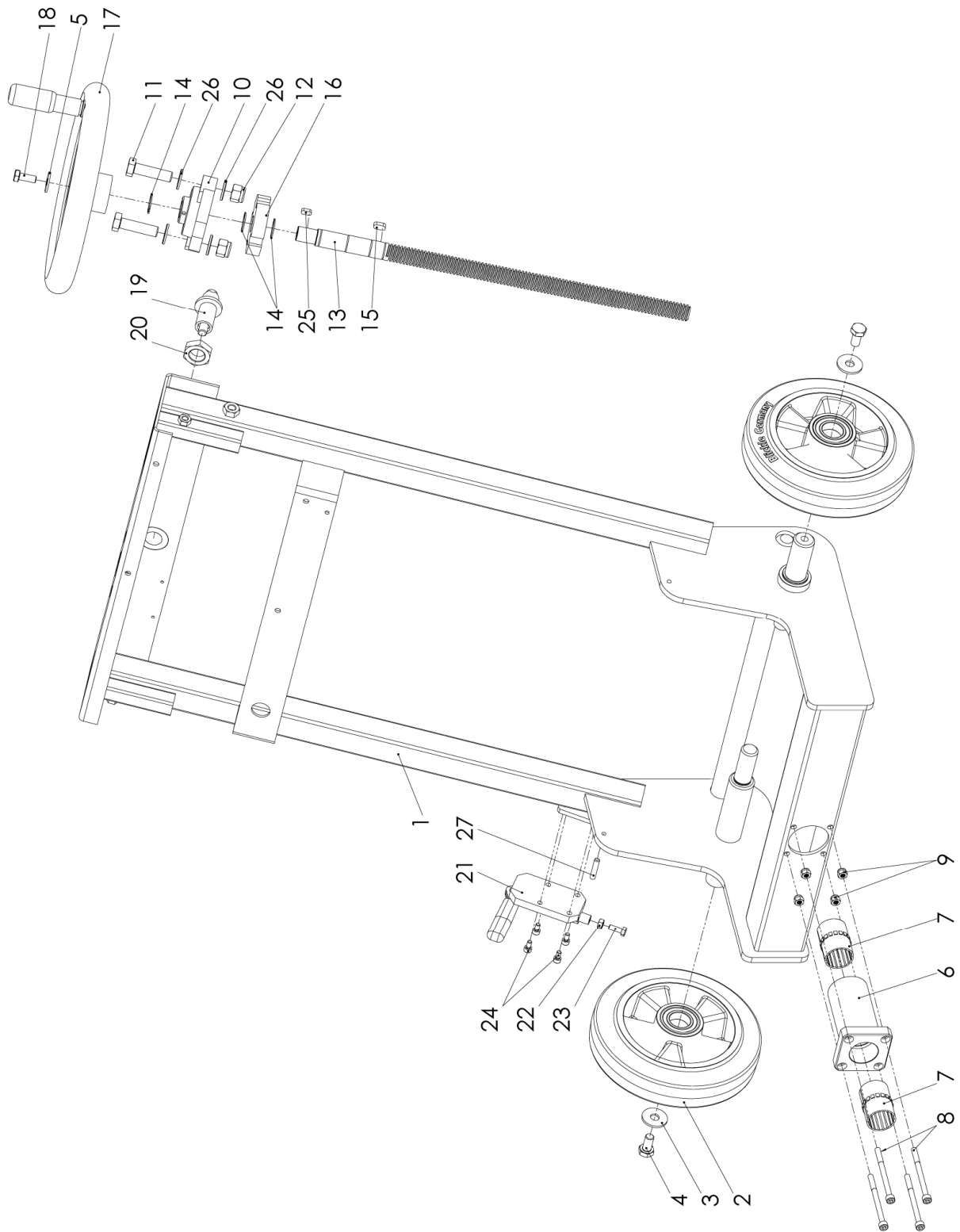
Always indicate:

- machine/model/serial number
- item number and description of the spare part
- amount of spare parts desired
- full address
- goods to be sent by regular mail, express, etc.

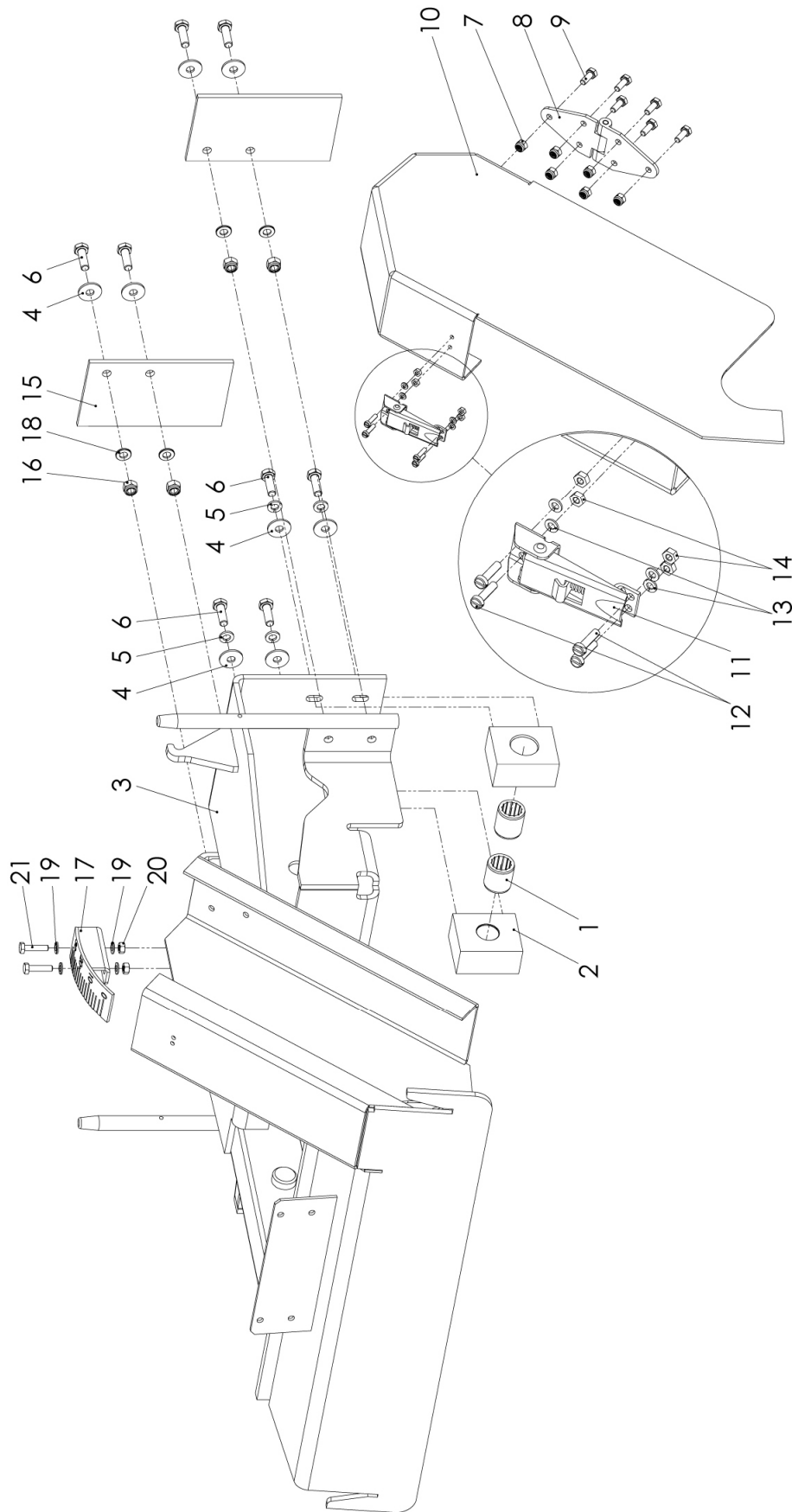


Pour obtenir rapidement les pièces de rechange indiquer :

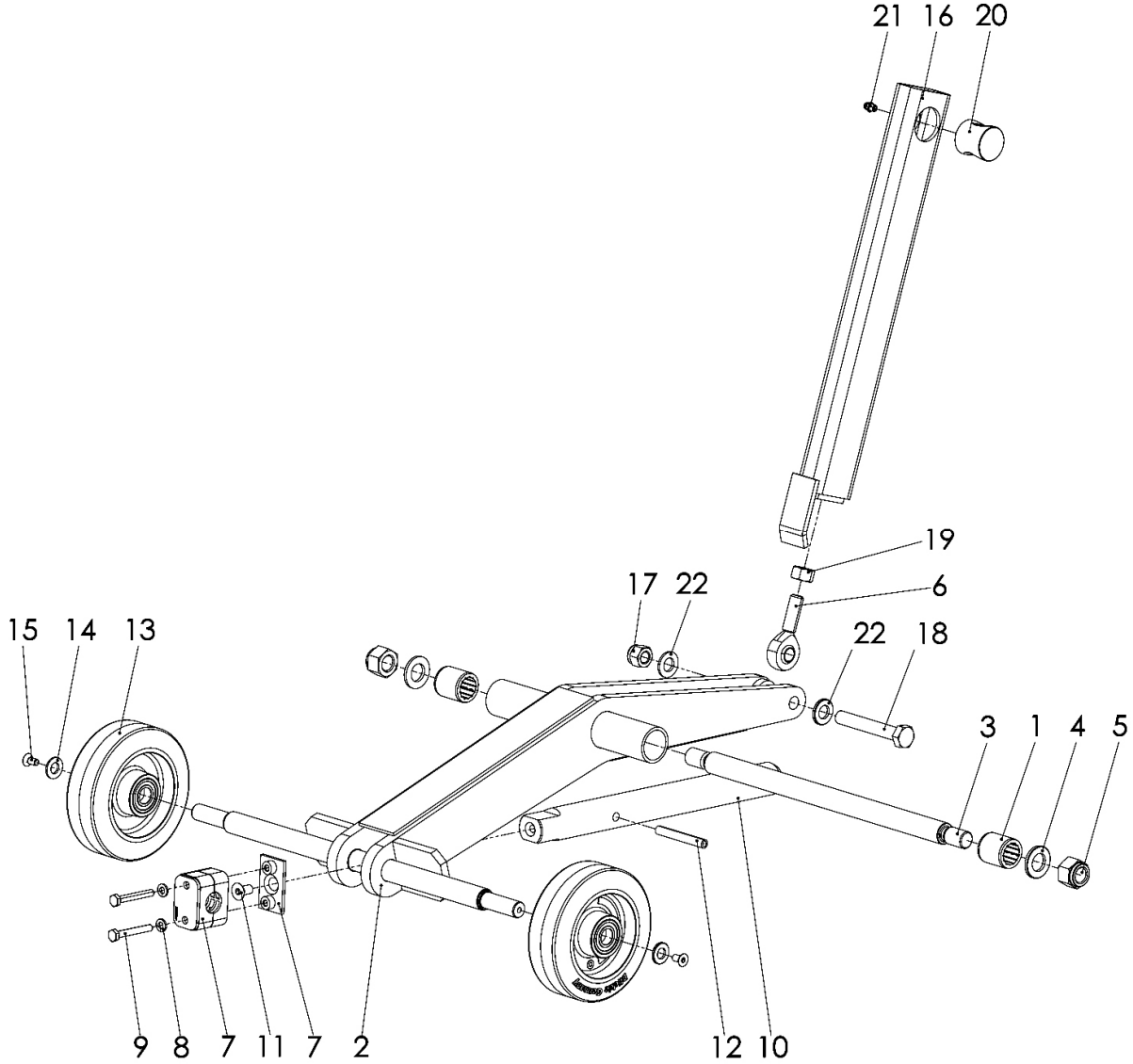
- N° de la machine, du modèle
- N° de l'article / description de la pièce désirée
- Nombre de pièces commandées
- Adresse de livraison
- Mode de livraison (poste, express etc...)



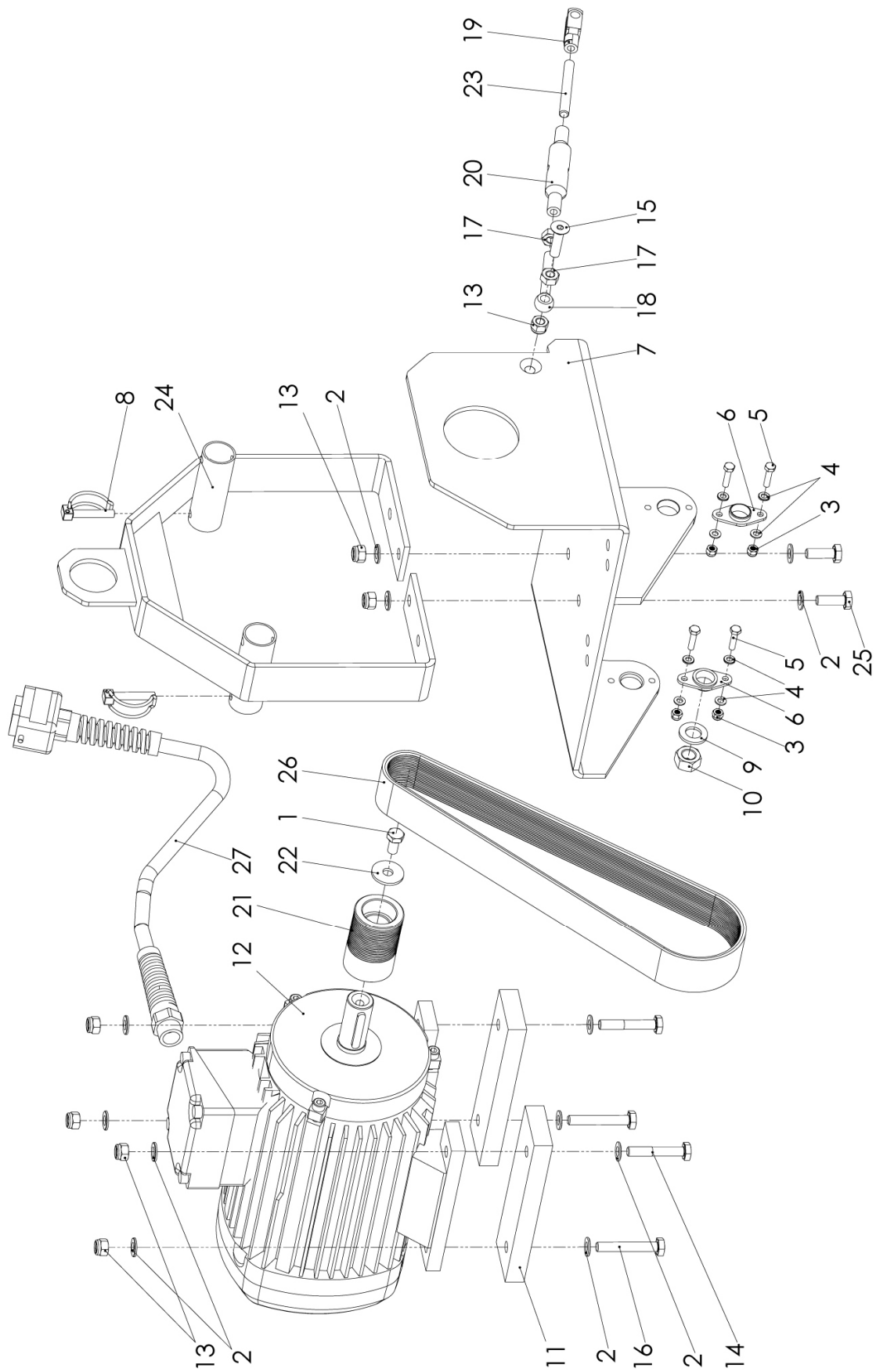
Pos.	Artikelnummer	Menge	Norm	Info	Benennung	Description	Désignation
1	0282 241 0087	1			Bedienpult	Control panel	Pupitre de commande
2	0282 241 0001	2		Ø 200 x 60 x Ø 25	Rad	Wheel	Roue
3	0298 900 0010	2	DIN EN ISO 7093	A 10,5	Scheibe	Washer	Rondelle
4	0295 000 0187	2	DIN EN ISO 4017	M 10 x 20	Schraube	Screw	Vis
5	0298 900 0008	1	DIN EN ISO 7093	A 8,4	Scheibe	Washer	Rondelle
6	0282 241 0026	1			Lagergehäuse	Bearing housing	Logement du palier
7	0282 241 0012	2		Ø 30	Gleitfolie	Sliding film	Glissière
8	0282 241 0013	4	DIN EN ISO 4762	M 6 x 80	Schraube	Screw	Vis
9	0281 045 0027	4	DIN EN ISO 7040	M 6	Mutter	Nut	Écrou
10	0282 240 0022	1		UCFL 204 Ø 20	Flanschlager	Flange bearing	Roulement avec flasque
11	0285 300 0018	2	DIN EN ISO 4017	M 12 x 45	Schraube	Screw	Vis
12	0285 300 0015	2	DIN EN ISO 7040	M 12	Mutter	Nut	Écrou
13	0282 241 0106	1		Tr 20 x 4	Spindel	Shaft	Fuseau
14	0282 250 0020	4	DIN 471	20 x 1,2	Sicherungsring	Circlip	Circlip
15	0282 241 0020	1	DIN 6885	6 x 6 x 14	Passfeder	Key	Clavette
16	0282 241 0008	1			Rastscheibe	Locking disc	Rondelle d'arrêt
17	0282 241 0101	1			Handrad	Handwheel	Volant
18	0282 150 0035	1	DIN EN ISO 4017	M 8 x 20	Schraube	Screw	Vis
19	0295 230 0013	1			Federriegel	Locking bar	Boulon d'arrêt
20	0295 230 0032	1	DIN EN ISO 8675	M 20 x 1,5	Mutter	Nut	Écrou
21	0282 241 0068	1			Bremse	Bracket	Frein
22	0285 300 0142	1	DIN EN ISO 4032	M 6	Mutter	Nut	Écrou
23	0295 000 3530	1	DIN EN ISO 4017	M 6 x 16	Schraube	Screw	Vis
24	0282 250 0321	4	DIN EN ISO 4762	M 5 x 10	Schraube	Screw	Vis
25	0295 600 0533	1	DIN 6885	5 x 5 x 12	Passfeder	Key	Clavette
26	0282 250 0105	4	DIN EN ISO 7090	B 13	Scheibe	Washer	Rondelle
27	0295 600 1034	1	DIN EN ISO 4026	M 6 x 30	Gewindestift	Grub screw	Vis sans tête
o.A.	0295 899 0273	1		Umplatzieren	Aufkleber	Label	Macaron
o.A.	0295 899 0033	1		Piktogramme	Aufkleber	Label	Macaron
o.A.	0295 899 0228	1		LWA111dB	Aufkleber	Label	Macaron
o.A.	0282 241 0076	1			Typenschild	Label	Plaque d'identification



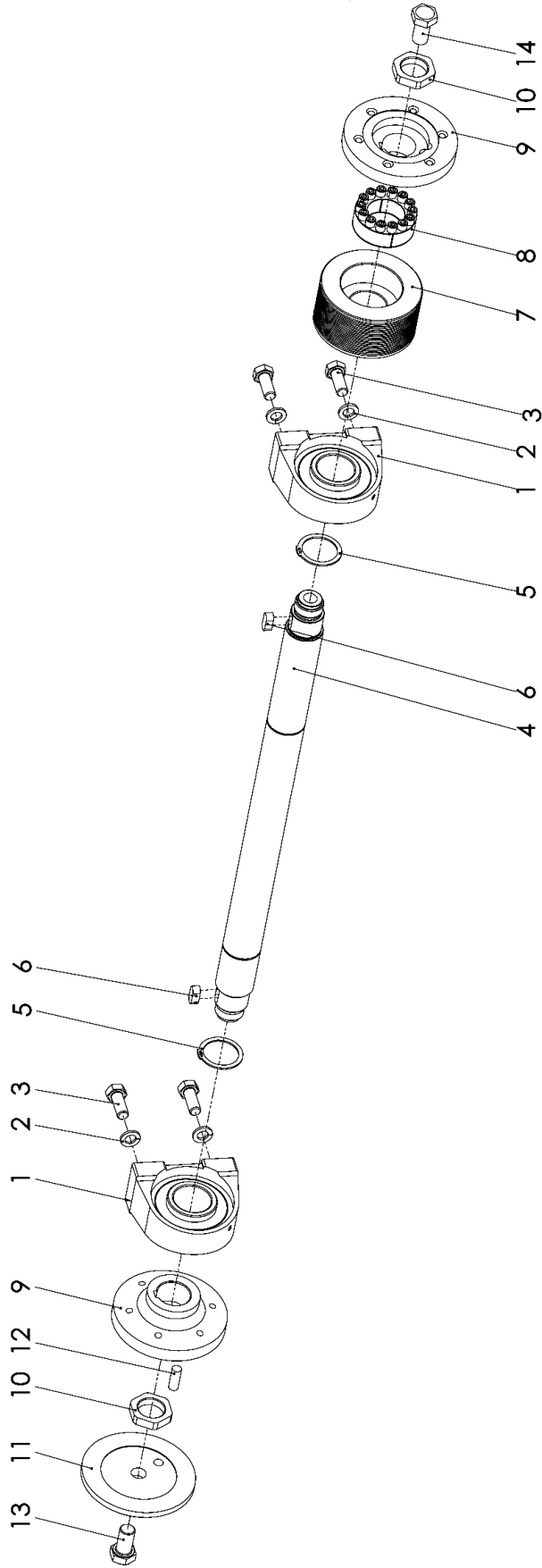
Pos.	Artikelnummer	Menge	Norm	Info	Benennung	Description	Désignation
1	0282 241 0002	2		Ø 20	Kompaktbuchse	Bushing	Douille
2	0282 241 0003	2			Gehäuselager	Bearing housing	Logement du palier
3	0282 241 0004	1			Chassis	Chassis	Châssis
4	0298 900 0008	8	DIN EN ISO 7093	A 8,4	Scheibe	Washer	Rondelle
5	0282 150 0036	4	DIN 127	A 8	Federring	Spring washer	Rondelle-ressort
6	0282 250 0073	8	DIN EN ISO 4017	M 8 x 25	Schraube	Screw	Vis
7	0281 045 0027	6	DIN EN ISO 7040	M 6	Mutter	Nut	Écrou
8	0282 252 0142	1			ZSB-Scharnier	Hinge	Charnière
9	0295 000 3530	6	DIN EN ISO 4017	M6 x 16	Schraube	Screw	Vis
10	0282 241 0044	1			Keilriemenschutzhaube	Blade guard pulley	Capot de protection poulie
11	0282 241 0046	1			Spannverschluss	Fastener	Tendeur
12	0267 112 5636	4	DIN EN ISO 1207	M 4 x 16	Schraube	Screw	Vis
13	0267 112 5646	4	DIN 127	A 4	Federring	Spring washer	Rondelle-ressort
14	9210 260 0600	4	DIN EN ISO 4032	M 4	Mutter	Nut	Écrou
15	0282 241 0047	2			Spritzschutz	Splash guard	Protection contre le réfrigérant
16	0282 065 0005	4	DIN EN ISO 7040	M 8	Mutter	Nut	Écrou
17	0282 241 0110	1			Schnitttiefenanzeige	Scale acceptance	Logement gamme
18	0282 250 0006	4	DIN EN ISO 7090	B 8,4	Scheibe	Washer	Rondelle
19	0286 570 0069	4	DIN EN ISO 7090	B 6,4	Scheibe	Washer	Rondelle
20	0285 300 0142	2	DIN EN ISO 4032	M 6	Mutter	Nut	Écrou
21	0295 000 0152	2	DIN EN ISO 4017	M 6 x 25	Schraube	Screw	Vis



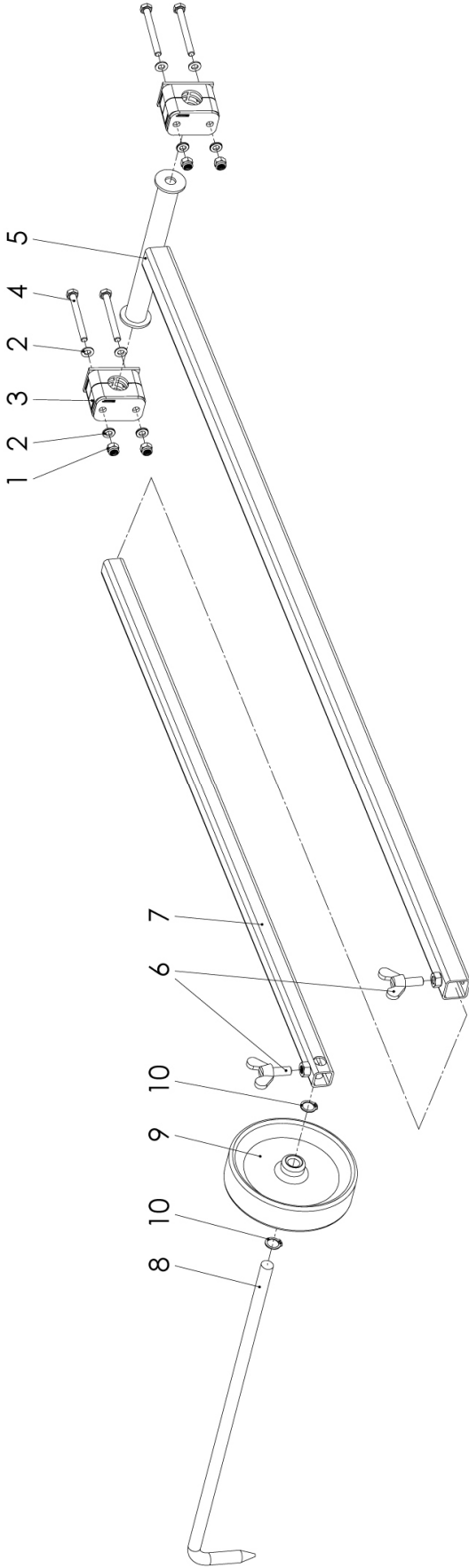
Pos.	Artikelnummer	Menge	Norm	Info	Benennung	Description	Désignation
1	0282 241 0002	2		Ø 20	Kompaktbuchse	Bushing	Douille
2	0282 241 0005	1			Fahrwerk	Carriage	Châssis
3	0282 241 0010	1			Fahrwerkachse	Carriage shaft	Axe de châssis
4	0282 250 0023	2	DIN EN ISO 7090	B 17	Scheibe	Washer	Rondelle
5	0282 450 0156	2	DIN EN ISO 7040	M 16	Mutter	Nut	Écrou
6	0282 241 0109	1	DIN 648		Gelenkkopf		
7	0282 241 0015	1			Schelle	Clamp	Étrier
8	0295 000 0174	2	DIN 127	B 6	Federring	Spring washer	Rondelle-ressort
9	0281 045 0092	2	DIN EN ISO 4017	M 6 x 45	Schraube	Screw	Vis
10	0282 241 0006	1			Führungsstange	Guide bar	Barre de guidage
11	0282 250 0004	1	DIN EN ISO 10642	M 8 x 16	Schraube	Screw	Vis
12	0282 241 0017	1	DIN EN ISO 8752	Ø 8 x 60	Spannhülse	Clamping sleeve	Douille de serrage
13	0282 241 0018	2			Rad	Wheel	Roue
14	0286 570 0047	2	DIN EN ISO 7090	B 10,5	Scheibe	Washer	Rondelle
15	0282 300 0019	2	DIN EN ISO 10642	M 6 x 12	Schraube	Screw	Vis
16	0282 241 0108	1			Spindelaufnahme	Support	Levé
17	0285 300 0015	1	DIN EN ISO 7040	M 12	Mutter	Nut	Écrou
18	0282 250 0127	1	DIN EN ISO 4017	M 12 x 80	Schraube	Screw	Vis
19	0295 000 0178	1	DIN EN ISO 4032	M 12	Mutter	Nut	Écrou
20	0282 241 0107	1		Tr 20 x 4	Spindelmutter	Trapezoid nut	Écrou de filet acme
21	0285 300 0010	1		M 6	Schmiernippel	Grease fitting	Graisser
22	0282 250 0105	2	DIN EN ISO 7090	B 13	Scheibe	Washer	Rondelle



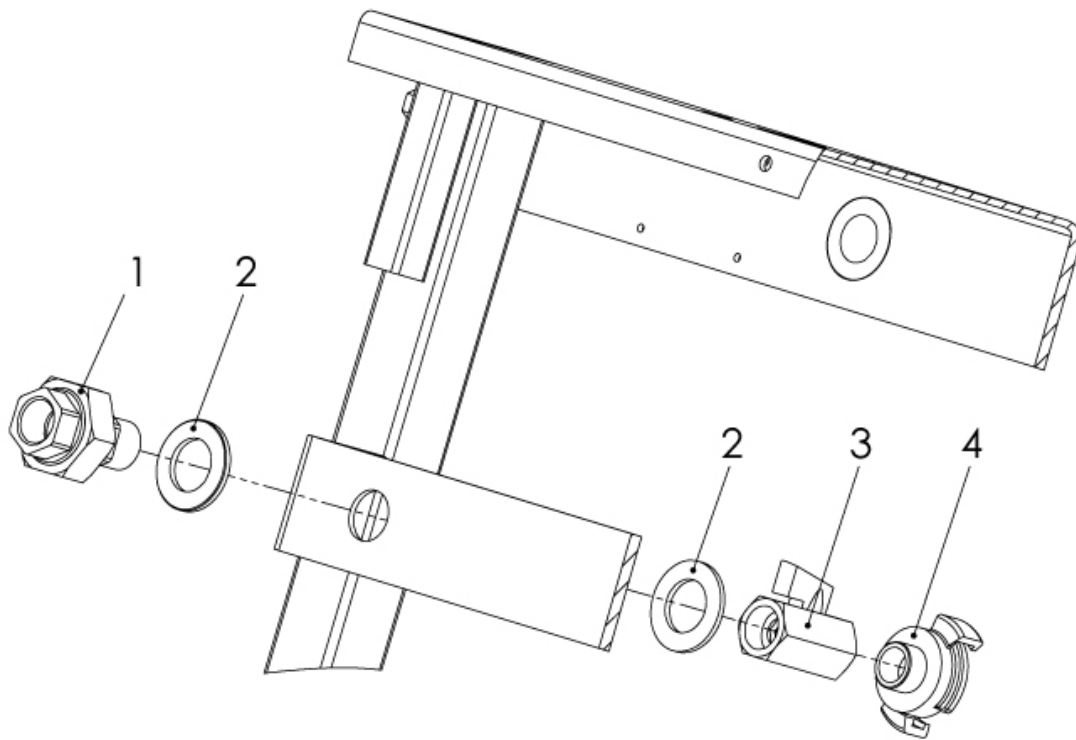
Pos.	Artikelnummer	Menge	Norm	Info	Benennung	Description	Désignation
1	0295 000 0187	1	DIN EN ISO 4017	M 10 x 20	Schraube	Screw	Vis
2	0286 570 0047	12	DIN EN ISO 7090	B 10,5	Scheibe	Washer	Rondelle
3	0281 045 0027	4	DIN EN ISO 7040	M 6	Mutter	Nut	Écrou
4	0286 570 0069	8	DIN EN ISO 7090	B 6,4	Scheibe	Washer	Rondelle
5	0295 000 0152	4	DIN EN ISO 4017	M 6 x 25	Schraube	Screw	Vis
6	0282 241 0025	2		Ø 20	Flanschlager	Flange bearing	Roulement avec flasque
7	0282 241 0091	1			Motorkonsole	Engine bracket	Console du moteur
8	0295 000 0003	2		8 x 45	Rohrklappenstecker	Tube lynch pin	Esse d'essieu
9	0295 000 0181	1	DIN EN ISO 7089	A 17	Scheibe	Washer	Rondelle
10	0281 045 0051	1	DIN EN ISO 4032	M 16	Mutter	Nut	Écrou
11	0282 241 0027	2			Distanzstück	Distance piece	Pièce intercalaire
12	0282 241 0074	1			Motor	Motor	Moteur
13	0286 570 0052	7	DIN EN ISO 7040	M 10	Mutter	Nut	Écrou
14	0281 073 0030	2	DIN EN ISO 4014	M 10 x 60	Schraube	Screw	Vis
15	0284 650 0093	1	DIN EN ISO 10642	M 10 x 40	Schraube	Screw	Vis
16	0295 000 0325	2	DIN EN ISO 4017	M 10 x 65	Schraube	Screw	Vis
17	0286 570 0046	2	DIN EN ISO 4032	M 10	Mutter	Nut	Écrou
18	0284 650 0053	1	DIN 444	M 10 x 75	Schraube	Screw	Vis
19	0282 241 0028	1	DIN 71751	M 10 x 20 LH	Gabelkopf	Fork head	Fourchette
20	0282 241 0032	1	DIN 1478	M 10	Spannschloßmutter	Spanner nut	Écrou de tension
21	0282 241 0084	1		55PJ20	Poly-V-Scheibe	V-belt pulley	Poulie pour courroie trapézoïdale
	0282 241 0033	1		55PK16 Bis Ma.-Nr. 2410005	Poly-V-Scheibe	V-belt pulley	Poulie pour courroie trapézoïdale
22	0282 241 0078	1	DIN EN ISO 7094	Ø 11 x Ø 34 x 3	Scheibe	Washer	Rondelle
23	0282 241 0030	1		M 10 x 80 LH	Gewindestange	Threaded bolt	Tige filetée
24	0282 241 0102	1			Transportbügel	Lifting bow	Anneau de levage
25	0295 000 0173	2	DIN EN ISO 4017	M 10 x 30	Schraube	Screw	Vis
26	0282 241 0086	1		20PJ-955	Poly-V-Riemen	V-belt	Courroie trapézoïdale
	0282 241 0073	1		12PK-962 Bis Ma.-Nr. 2410005	Poly-V-Riemen	V-belt	Courroie trapézoïdale
24	0282 241 0079	1			Motorkabel konf.	Motor lead	Câble du Moteur



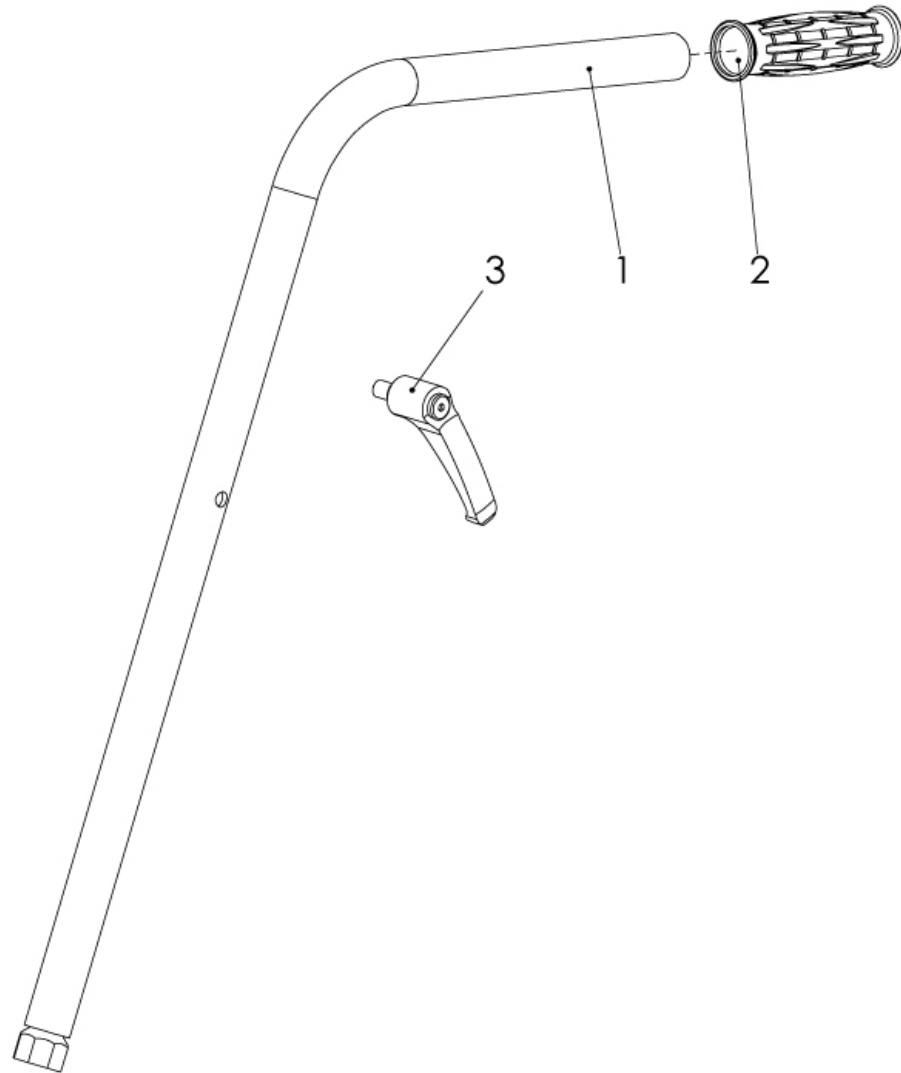
Pos.	Artikelnummer	Menge	Norm	Info	Benennung	Description	Désignation
1	0282 241 0072	2		UCPG208	Stehlager	Pedestal bearing	Chaise palier
2	0286 570 0025	4	DIN 127	A 12	Federring	Spring washer	Rondelle-ressort
3	0286 570 0020	4	DIN EN ISO 4017	M 12 x 30	Schraube	Screw	Vis
4	0282 241 0035	1			Schneidwelle	Blade shaft	Arbre de coupe
5	9455 621 4330	2	DIN 471	40 x 1,75	Sicherungsring	Circlip	Circlip
6	0282 520 0032	2	DIN 6885	A 10 x 8 x 22	Paßfeder	Key	Clavette
7	0282 241 0085	1		110PJ20	Poly-V-Scheibe	V-belt pulley	Poulie pour courroie trapézoïdale
	0282 241 0037	1		110PK12 Bis Ma.-Nr. 2410005	Poly-V-Scheibe	V-belt pulley	Poulie pour courroie trapézoïdale
8	0282 241 0036	1		COM Ø 40	Spannsatz	Clamping set	Jeu de serrage
9	0282 241 0038	2			Schneidflansch innen	Inner flange	Flasque de fixation intérieure
10	0282 241 0039	2		M 30 x 1,5	Flanschmutter	Flange nut	Écrou
11	0282 241 0040	1			Schneidflansch außen	Outer flange	Flasque de fixation extérieure
12	0282 241 0041	1	DIN EN ISO 2338	10 m6 x 30	Zylinderstift	Dowel pin	Goupille cylindrique
13	0282 240 0042	1	DIN EN ISO 8676	M 16 x 1,5 x 30 LH	Schraube	Screw	Vis
14	0282 240 0040	1	DIN EN ISO 8676	M 16 x 1,5 X 30	Schraube	Screw	Vis



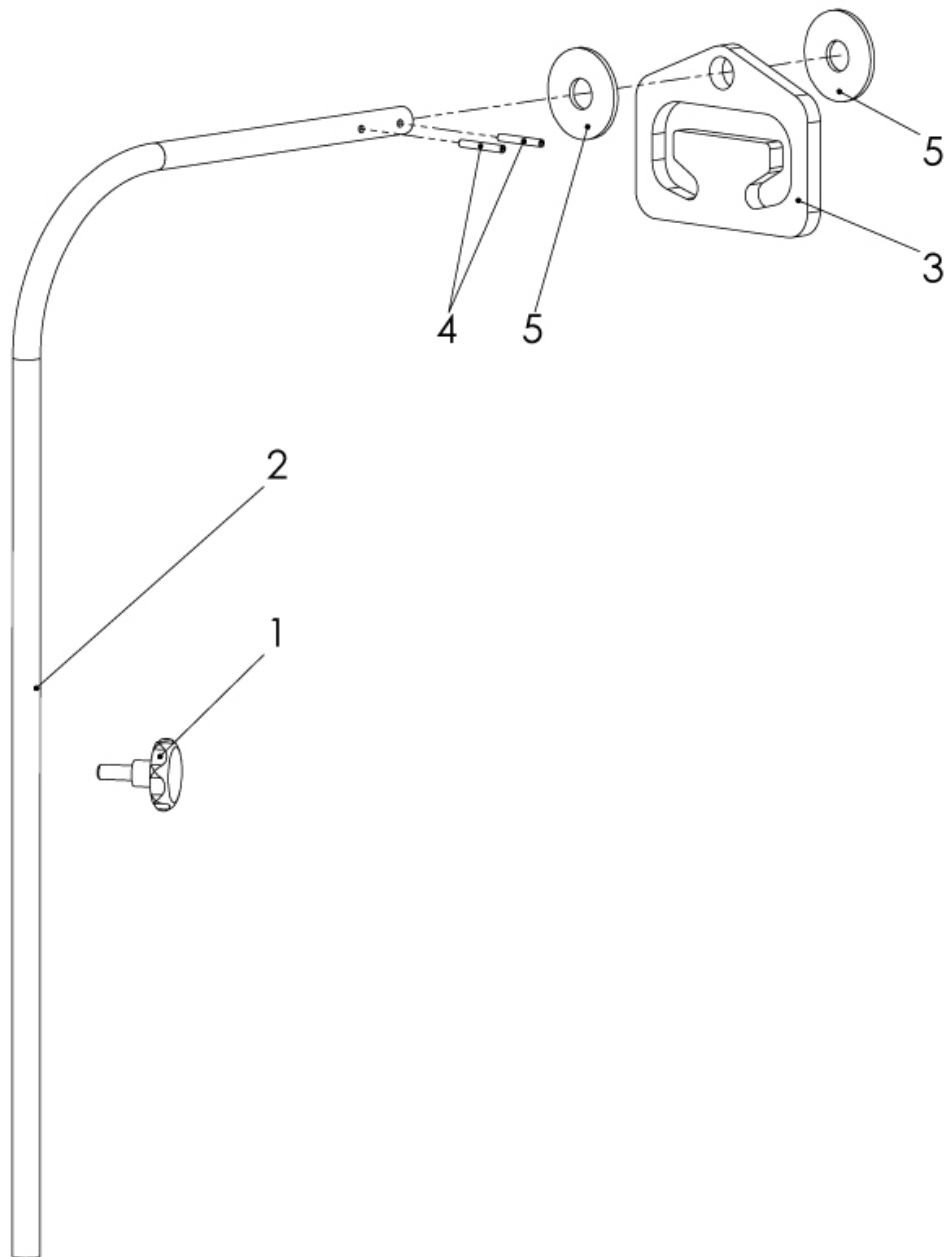
Pos.	Artikelnummer	Menge	Norm	Info	Benennung	Description	Désignation
1	0281 045 0027	4	DIN EN ISO 7040	M 6	Mutter	Nut	Écrou
2	0286 570 0069	8	DIN EN ISO 7090	B 6,4	Scheibe	Washer	Rondelle
3	0282 250 0649	2		Ø 20	Befestigungsschelle	Mounting clamp	Collier de fixation
4	0282 250 0804	4	DIN EN ISO 4017	M 6 x 60	Schraube	Screw	Vis
5	0282 252 0148	1			Aufnahme Richtungsanzeiger	Indicator acceptance	Levé d'indicateur de direction
6	0282 150 0034	2	DIN 316	M 8 x 20	Schraube	Screw	Vis
7	0282 252 0107	1			Verlängerung Richtungsanzeiger	Indicator extension	Rallongement d'indica- teur de direction
8	0282 241 0062	1			Richtungspfeil	Directional arrow	Indicateur de direction
9	0282 250 0777	1		Ø 125	Rad	Wheel	Roue
10	0295 000 0167	2	DIN 471	12 x 1	Sicherungsring	Circlip	Circlip



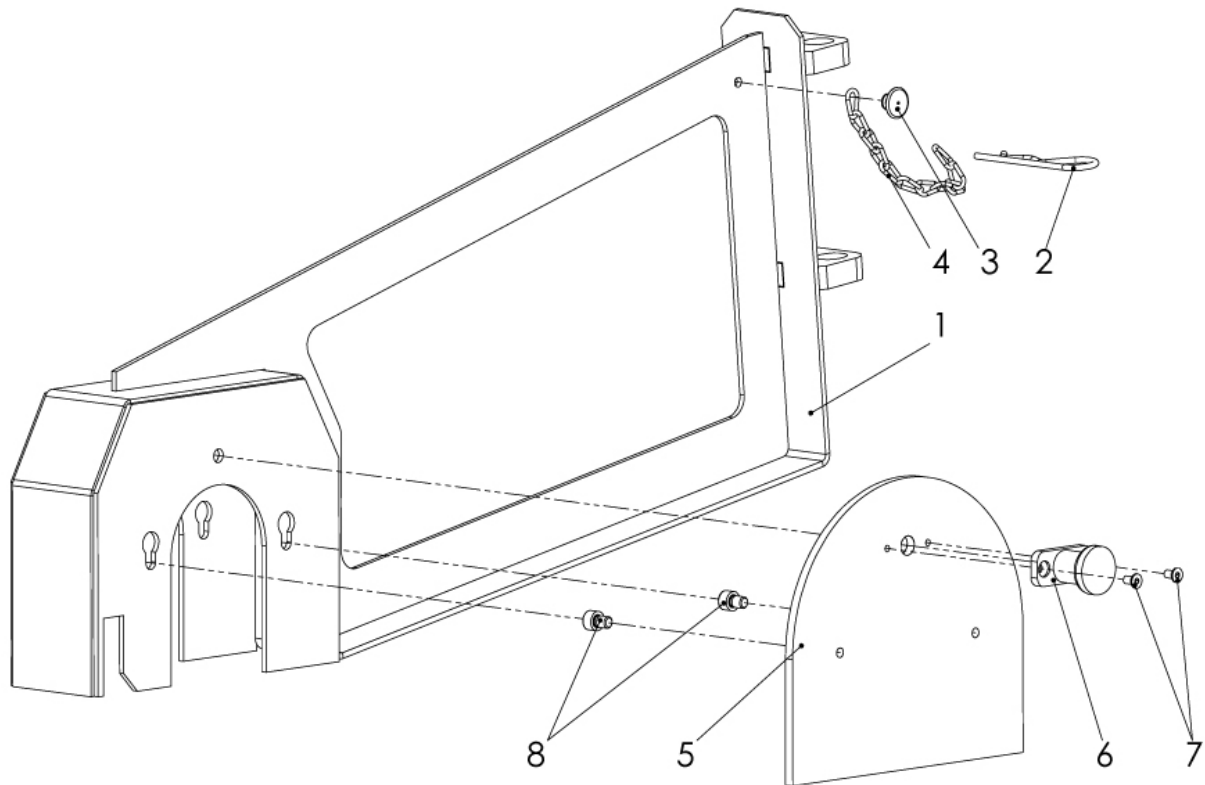
Pos.	Artikelnummer	Menge	Norm	Info	Benennung	Description	Désignation
1	0284 000 0352	1		1/2" I/A	Doppelnippel, lösbar	Double nipple, removeable	Double raccord fileté, soluble
2	0282 301 0136	2	DIN EN ISO 7090	B 23	Scheibe	Washer	Rondelle
3	0282 120 0040	1		R 1/2" I	Minikugelhahn	Ball valve	Robinet à tournant sphérique
4	0282 250 0549	1		1/2" A	GEKA-Kupplung	GEKA-coupler	GEKA-Accouplement



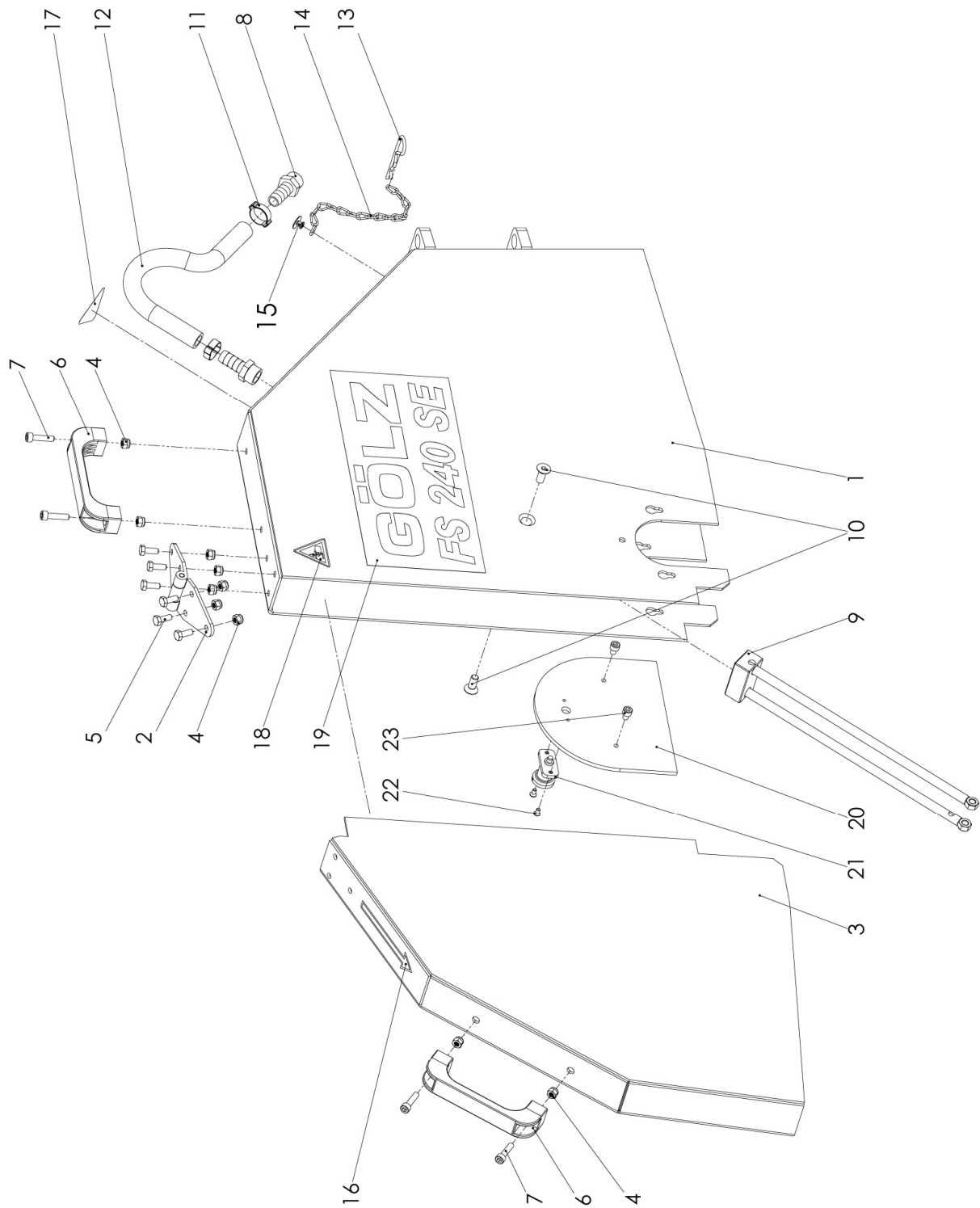
Pos.	Artikelnummer	Menge	Norm	Info	Benennung	Description	Désignation
1	0282 241 0090	2			Schubstange	Connecting rod	Jambe de force
2	0285 300 0044	2			Kunststoffgriff	Handle	Poignée
3	0282 241 0095	2		M 10 x 16	Klemmhebel	Clamp lever	Levier de serrage



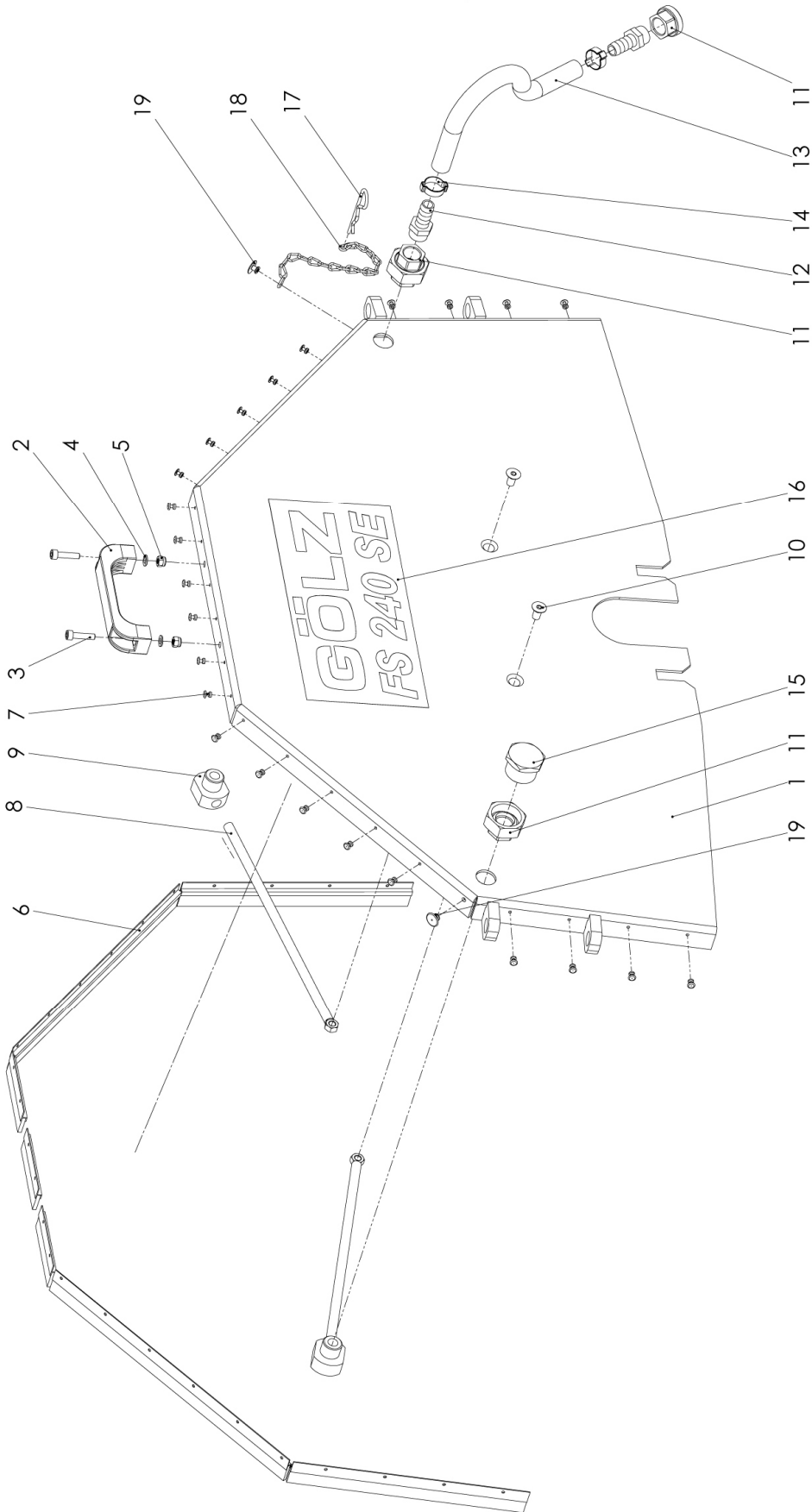
Pos.	Artikelnummer	Menge	Norm	Info	Benennung	Description	Désignation
1	0282 190 0224	1	DIN 6336	M 8 x 20	Sterngriffschraube	Star grip screw	Vis de poignée-étoile
2	0282 241 0097	1			Kabelhalter	Cable support	Cadre support du câble
3	0282 241 0096	1			Zugentlastung	Strain relief	Décharge de traction
4	0285 300 0027	2	DIN EN ISO 8752	4 x 32	Spannhülse	Clamping sleeve	Douille de serrage
5	0298 900 0017	2	DIN EN ISO 7093	A 17	Scheibe	Washer	Rondelle



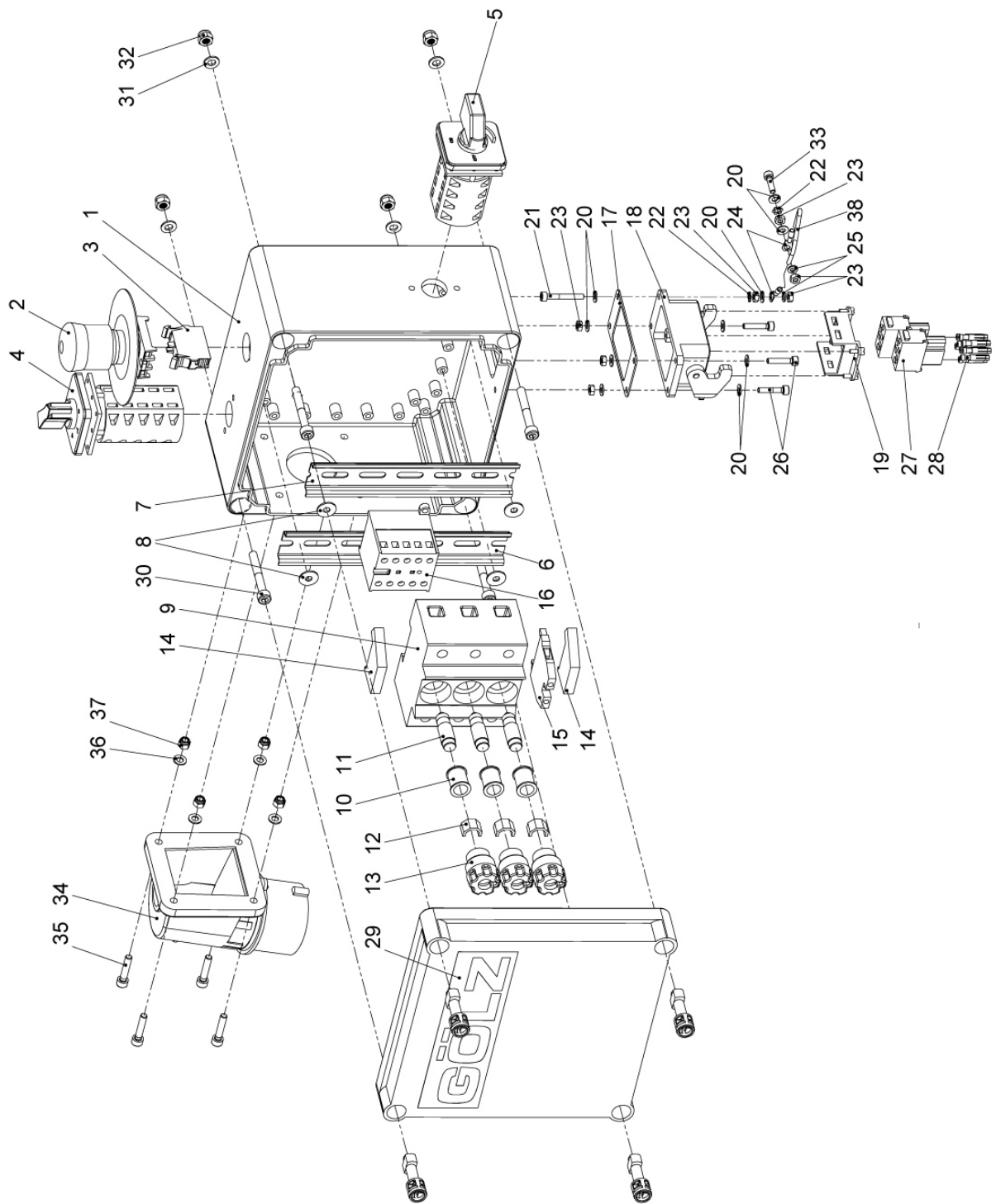
Pos.	Artikelnummer	Menge	Norm	Info	Benennung	Description	Désignation
1	0282 241 0045	1			Flanschschutzhäube	Flange cover	Carter de protection du flasque
2	0282 301 0183	1	DIN 11024	Ø 4	Federstecker	Spring connector	Goupille a ressort
3	0282 241 0034	1	DIN 7337	Ø 4,8 x 10	Blindniet	Blind rivet	Rivet
4	0282 241 0077	1		0,25 m	Knotenkette	Knotted link chain	Chaîne à nousées
5	0282 241 0049	1			Schutzblech Schneidwelle	Blade shaft protection	Protection d'arbre de coupe
6	0282 241 0056	1			Rastbolzen	Locking pin	Boulon d'arrêt
7	0283 300 0278	2	DIN EN ISO 10642	M 4 x 8	Schraube	Screw	Vis
8	0295 230 0033	2	DIN EN ISO 4762	M 6 x 8	Schraube	Screw	Vis



Pos.	Artikelnummer	Menge	Norm	Info	Benennung	Description	Désignation
-	0282 241 0055	1		Pos. 1-23	Schutzhaube kpl.	Cover assy.	Carter de protection compl.
1	0282 241 0048	1			Schutzhaube hinten	Cover, back	Carter de protection, derrière
2	0282 252 0142	1			Scharnier	Hinge	Charnière
3	0282 241 0052	1			Schutzhaube vorne	Cover, front	Carter de protection, à l'avant
4	0281 045 0027	10	DIN EN ISO 7040	M 6	Mutter	Nut	Écrou
5	9008 319 1280	6	DIN EN ISO 4017	M 6 x 16	Schraube	Screw	Vis
6	0282 250 0775	2			Griff	Handle	Poignée
7	0282 250 0084	4	DIN EN ISO 4762	M 6 x 25	Schraube	Screw	Vis
8	0282 150 0031	2		R 1/2"	Schlauchtülle	Hose clip	Embout à olive
9	0282 241 0053	1			Wassergabel	Water fork	Conduit d'eau
10	0282 240 0039	2	DIN EN ISO 10642	M 8 x 20	Schraube	Screw	Vis
11	0295 010 0052	2			2-Ohr-Schelle	Clamp	Étrier
12	0298 100 0106	1		1 m	Schlauch	Hose	Tuyau
13	0282 301 0183	1	DIN 11024	Ø 4	Federstecker	Spring connector	Goupille a ressort
14	0282 241 0077	1		0,25 m	Knotenkette	Knotted link chain	Chaîne à nousées
15	0282 241 0034	1	DIN 7337	Ø 4,8 x 10	Blindniet	Blind rivet	Rivet
16	0295 899 0009	1		Pfeil	Aufkleber	Label	Macaron
17	0295 899 0314	1		Fräswelle	Aufkleber	Label	Macaron
18	0295 899 0346	2		Handverletzung	Aufkleber	Label	Macaron
19	0282 241 0054	2		Gölz	Aufkleber	Label	Macaron
20	0282 241 0049	1			Schutzblech Schneidwelle	Blade shaft protection	Portection d'arbre de coupe
21	0282 241 0056	1			Rastbolzen	Locking pin	Boulon d'arrêt
22	0283 300 0278	2	DIN EN ISO 10642	M 4 x 8	Schraube	Screw	Vis
23	0295 230 0033	2	DIN EN ISO 4762	M 6 x 8	Schraube	Screw	Vis



Pos.	Artikelnummer	Menge	Norm	Info	Benennung	Description	Désignation
-	0282 241 0061	1		Pos. 1-19	Schutzhaube kpl.	Cover assy.	Carter de protection compl.
1	0282 241 0051	1			Schutzhaube	Cover	Carter de protection
2	0282 250 0775	1			Griff	Handle	Poignée
3	0282 250 0084	2	DIN EN ISO 4762	M 6 x 25	Schraube	Screw	Vis
4	0286 570 0069	2	DIN EN ISO 7090	B 6,4	Scheibe	Washer	Rondelle
5	0281 045 0027	2	DIN EN ISO 7040	M 6	Mutter	Nut	Écrou
6	0283 900 5002	1		6A-15 1,55 m	Abdichtbürste	Seal brush	Étanchéité
7	0298 100 0022	24	DIN 7337	Ø 3 x 8	Blindniet	Blind rivet	Rivet
8	0282 241 0059	2			Wassergabel	Water fork	Conduit d'eau
9	0282 241 0060	2			Wassergabelaufnahme	Water fork support	Conduit d'eau levé
10	0282 250 0004	2	DIN EN ISO 10642	M 8 x 16	Schraube	Screw	Vis
11	0282 241 0070	2		1/2" I/A	Doppelnippel, lösbar	Double nipple, removeable	Double raccord fileté, soluble
12	0282 150 0031	2		R 1/2"	Schlauchtülle	Hose clip	Embout à olive
13	0298 100 0106	1		1 m	Schlauch	Hose	Tuyau
14	0295 010 0052	2		Ø 17-20	2-Ohr-Schelle	Clamp	Étrier
15	0282 241 0071	1		R 1"	Verschlussstopfen	Closing plug	Bouchon d'étanchéité
16	0282 241 0054	1		Gölz	Aufkleber	Label	Macaron
17	0282 301 0183	2	DIN 11024	Ø 4	Federstecker	Spring connector	Goupille a ressort
18	0282 241 0077	2		0,25 m	Knotenkette	Knotted link chain	Chaîne à nousées
19	0282 241 0034	2	DIN 7337	Ø 4,8 x 10	Blindniet	Blind rivet	Rivet



Pos.	Artikelnummer	Menge	Norm	Info	Benennung	Description	Désignation
1	0282 241 0092	1			Gehäuse	Box	Boîte
2	0282 252 0259	1			Not-Aus-Pilztaster	Emergency shut-off	Bouton d'arrêt d'urgence
3	0282 252 0261	1			Öffnerkontakt	Contact block	Bloc en contact
4	0282 650 0148	1			Stern-Dreieck-Schalter	Star-Delta connection	Commutateur étoile-triangle

Pos.	Artikelnummer	Menge	Norm	Info	Benennung	Description	Désignation
5	0282 650 0147	1			Haupt-Not-Ausschalter	Main switch	Commutateur principal
6	0282 252 0164	1		180 mm	Hutschiene	Cap rail	Profilé-support
7	0282 252 0164	1		165 mm	Hutschiene	Cap rail	Profilé-support
8	9307 021 0120	4	DIN EN ISO 7093	A 5,3	Scheibe	Washer	Rondelle
9	0282 252 0274	1			Sicherungssockel	Fuse base	Socle de fusible
10	0282 241 0042	3		16A	Passeinsatz Neozed	Screw-in sleeve socket	Vis de calibrage
11	0282 241 0043	3		16A	Sicherung Neozed	Fuse	Fusible
12	0282 241 0082	3		D02	Feder Schraubkappe	Spring screw cap	Ressort bouchon fileté
13	0282 252 0275	3		32°	Sicherungsschraubkappe	Safety screw cap	Bouchon fileté du sécurité
14	0282 252 0268	2			Endstück	End cap	Bloc d'extrémité
15	0282 301 0212	1		2,5 / 4 mm 34A	Reihenklemme	Terminal	Bornier
16	0282 241 0111	1		DILM17-10	Schütz	Contactactor	Contacteur
17	0295 510 0990	1			Dichtung	Seal	Joint
18	0295 510 0640	1		H-B 6 Epic	Anbaugehäuse	Mounting case	Boîte
19	0295 510 0681	1			Rahmen	Frame	Cadre
20	0267 112 5648	10	DIN EN ISO 7089	A 4,3	Scheibe	Washer	Rondelle
21	0295 001 0130	1	DIN EN ISO 4762	M 4 x 30	Schraube	Screw	Vis
22	0283 300 0570	2	DIN 6797	A 4,3	Zahnscheibe	Lock washer	Disque denté
23	9210 260 0600	7	DIN EN ISO 4032	M 4	Mutter	Nut	Écrou
24	0298 100 0076	2	DIN 46237	M 4, 1,5-2,5 ²	Ringkabelschuh	Ring terminal	Serre-câble
25	0267 112 5646	2	DIN 127	A 4	Federring	Spring washer	Rondelle-ressort
26	0281 100 0014	3	DIN EN ISO 4762	M 4 x 20	Schraube	Screw	Vis
27	0295 510 0051	2		5-polig	Modul Buchse	Module bushing	Module Douille
28	0295 510 0017	9		2,5 ²	Buchsenkontakt	Bushing contact	Contact de douille
29	0282 241 0075	1		Gölz	Aufkleber	Label	Macaron
30	0267 112 5641	4	DIN EN ISO 4762	M 6 x 40	Schraube	Screw	Vis
31	0286 570 0069	4	DIN EN ISO 7090	B 6,4	Scheibe	Washer	Rondelle
32	0281 045 0027	4	DIN EN ISO 7040	M 6	Mutter	Nut	Écrou
33	0295 000 0129	1	DIN EN ISO 4762	M 4 x 16	Schraube	Screw	Vis
34	0282 241 0094	1		16A, CEE	Stecker	Plug	Prise mâle
35	0295 000 0313	4	DIN EN ISO 4792	M 5 x 25	Schraube	Screw	Vis
36	0295 000 0170	4	DIN EN ISO 7089	A 5,3	Scheibe	Washer	Rondelle
37	0295 000 0177	4	DIN EN ISO 7040	M 5	Mutter	Nut	Écrou
38	-	1			Kabel	Cable	Câble

10. Wiring diagram

