



SERVICE MANUAL BMS-220 ADB

VERSION 1.3

**EC DECLARATION OF CONFORMITY**

in accordance with Appendix II sub A of Directive 2006/42/EC

BLASTRAC B.V.

Utrechthaven 12
NL - 3433 PN NIEUWEGEIN
Tel: 0031 (0)30 601 88 66
Fax: 0031 (0)30 601 83 33
Info@Blastrac.nl
The Netherlands

Declare under our sole responsibility that the machine as described below conforms with the Health and Safety requirements of the European Directive of the machine Safety.

In case of changes to the machine without our written authorization this declaration loses its validity.

Model: **BLASTRAC BMS-220ADB-0600**

Serial number:

1. satisfies the conditions set out in the Machine Directive (Directive 2006/42/EC); Low voltage directive (2006/95/EC, as last amended; EMC directive 2004/108/EC, as last amended)
2. satisfies the following harmonized standards:
NEN-EN 349, NEN-EN 418, NEN-EN 294 and NEN-EN 60204

Nieuwegein


Michiel Kalisvaart



Index

1. Spare parts	04
2. Hydraulic schedule	14
3. Electric schedule	15
Contact	23

1. Spare parts

Fig. 01

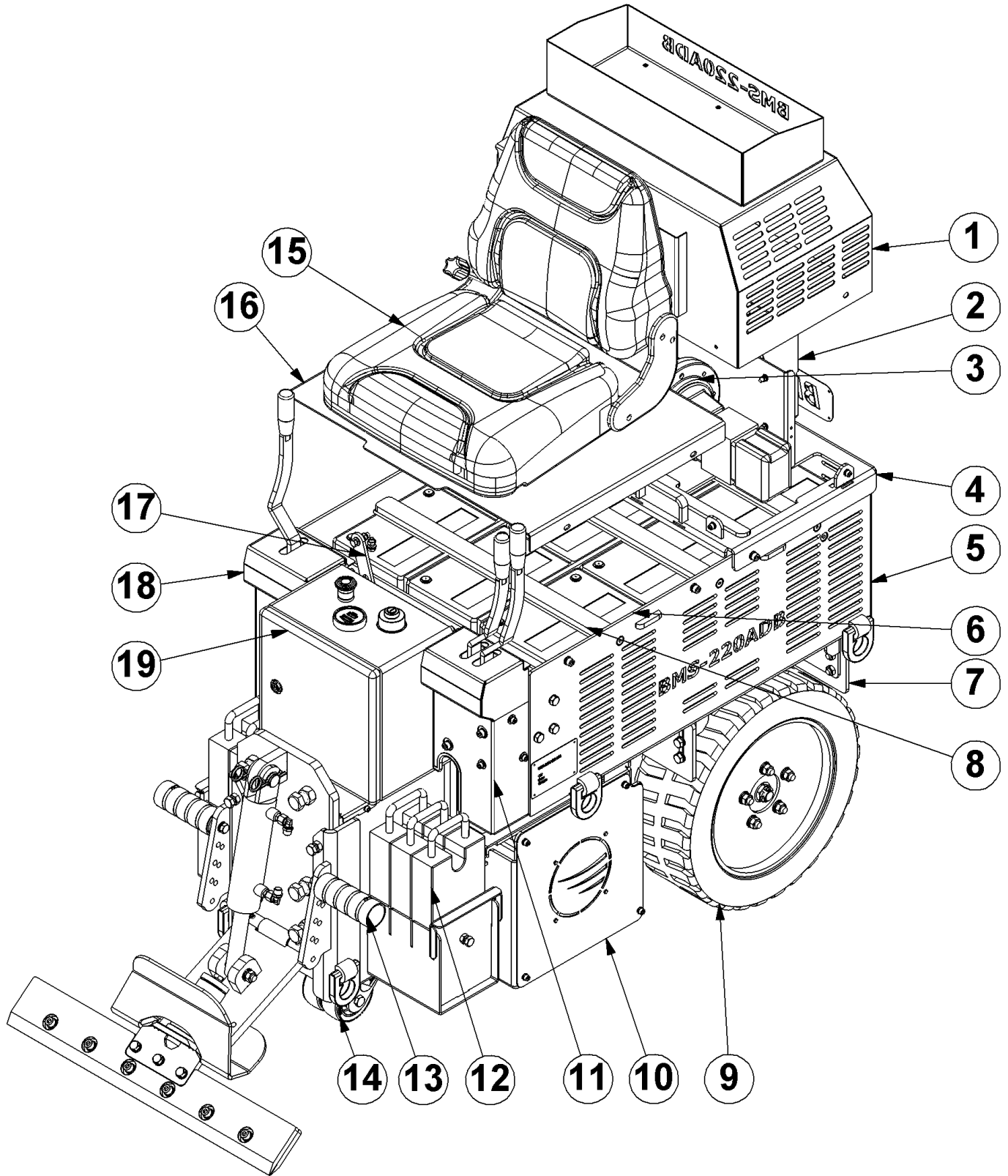


Fig. 01

Item	Part number	Description	Qty.
1	E08635	Upper battery cover	1
2	E09176	Charger	1
3	E09720	Motor with pumps	1
4	E08634	Tub cover - back	1
5	E08631	Tube weldmet	1
6	E09721	Battery – BMS-220	12
7	E09716	Scraper	4
8	E08632	Battery hold down strip	3
9	E09169	Wheel complete –BMS-220ADB	2
10	E09942	Side cover LH	1
11	E09702	Spool cover	1
12	E03185	Weight	6
13	E08622	Foot support	2
14	E09277	Front wheel	1
15	E09168	Seat	1
16	E08636	Tube cover front	1
17	E09838	Protection plate	1
18	E09704	Single spool cover	1
19	E09376	Electrobox	1

Fig. 02

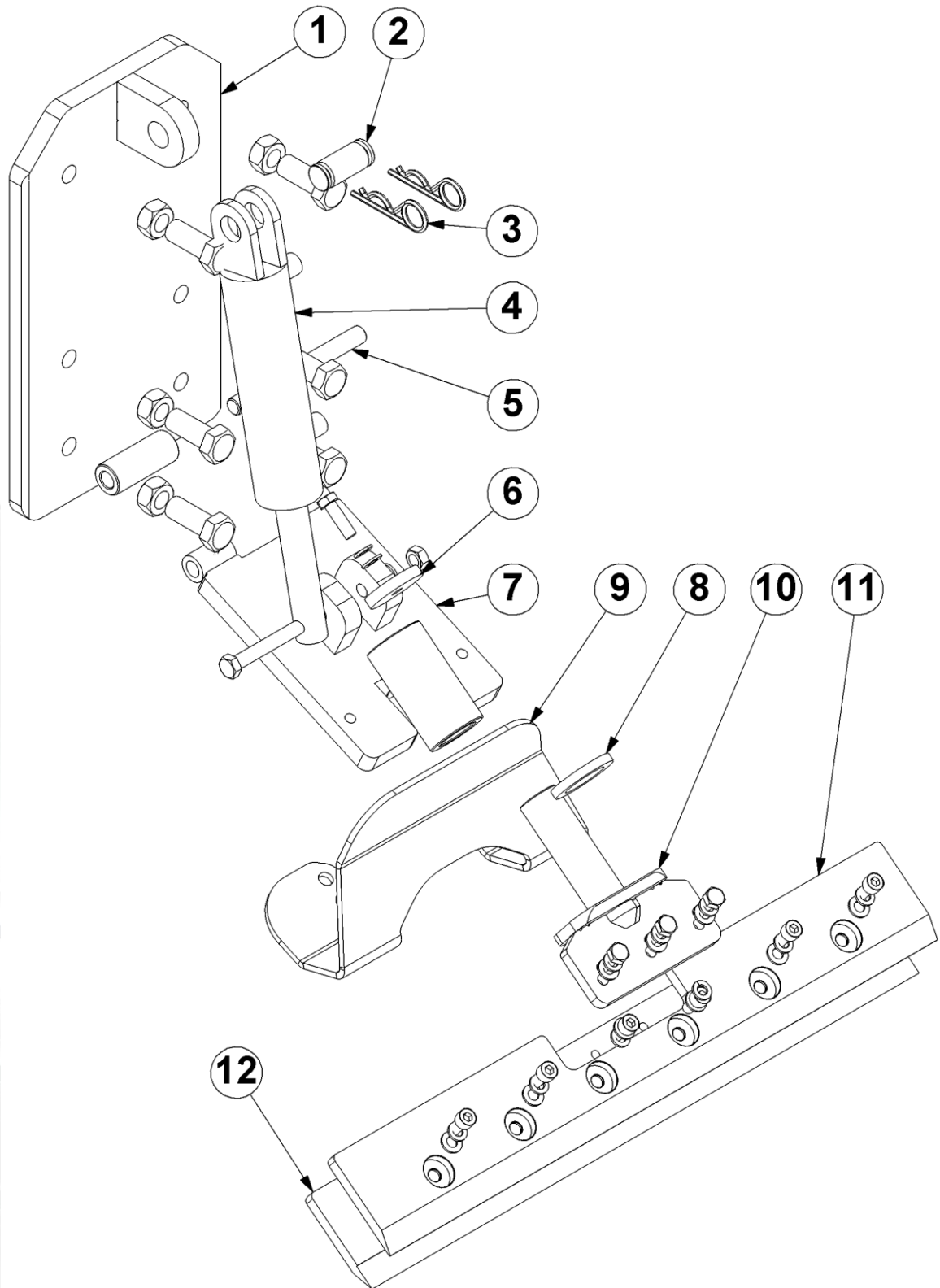


Fig. 02

Item	Part number	Description	Qty.
1	E08623	Slide plate	1
2	E09711	Cylinder connecting rod	1
3	BE0234	Locking Clip double 4,5mm	2
4	E09171	Hydraulic cylinder	1
5	E08624	Cutting head hinge pin	1
6	E09949	Tool holder plate	1
7	E09537	Universal lower cutting head support	1
8	E09953	Tool holder washer	1
9	E09950	Debris deflector – new holder shape	1
10	E09538	Tool holder	1
6+8 +10	E09664	Tool holder complete	1
			1
11+ 12	E09630	Blade holder 152mm(6")	1
	E09631	Blade holder 203mm(8")	1
	E09632	Blade holder 254mm(10")	1
	E09633	Blade holder 305mm(12")	1
	E09634	Blade holder 355mm(14")	1
	E09635	Blade holder 686mm(27")	1

Fig. 03

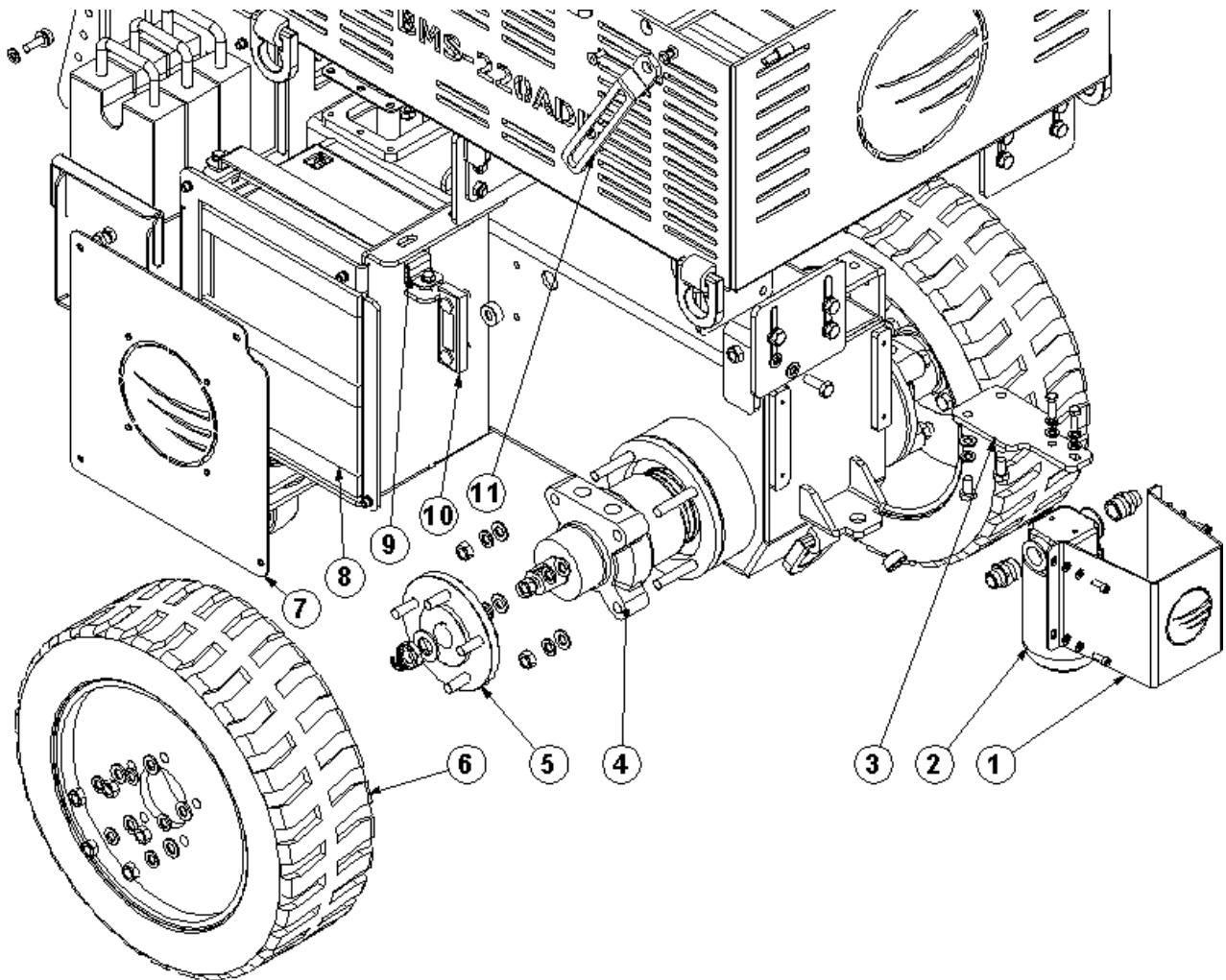


Fig. 03

Item	Part number	Description	Remarks	Qty.
1	E09709	Filter cover		1
2	E09722	Oil filter		1
3	E09708	Filter bracket		1
4	E07732	Hydraulic motor		2
5	E09170	Wheel hub		2
6	E09169	Wheel complete -BMS 220ADB		1
7	E09942	Side cover LH		1
8	E09715	B21188 adhesive rubber seal 30x20mm long -260mm		6
9	E09796	Battery holder plate		2
10	350-4172-S	Level gauge with thermo		1
11	E09805	Hinge plate		1
	E00481	Hydraulic oil HV46		40

Fig. 04

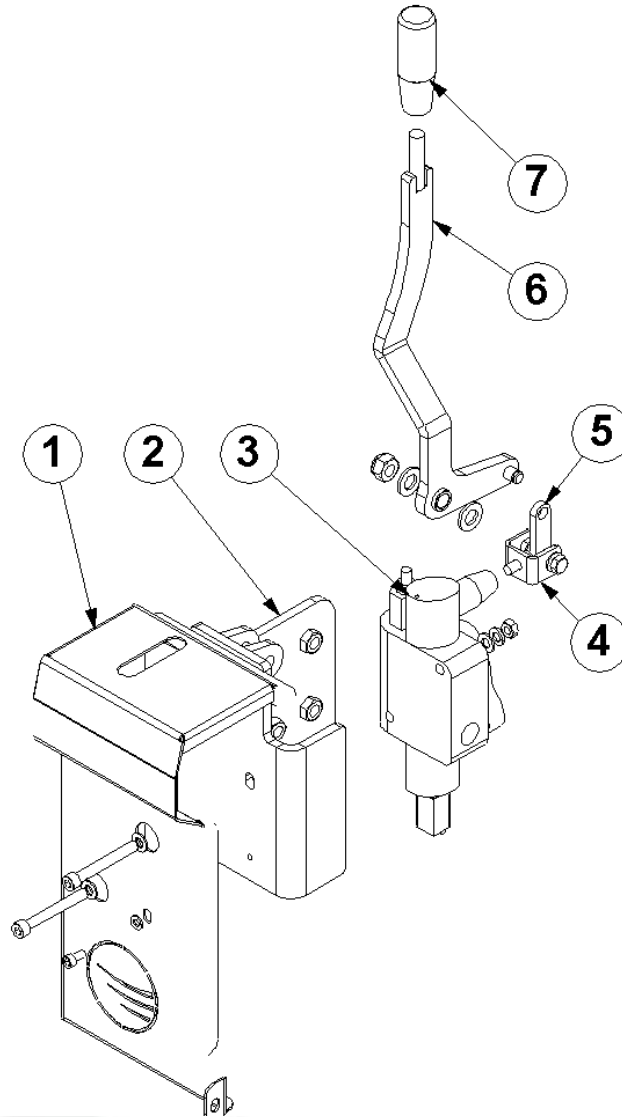


Fig. 04

Item	Part number	Description	Qty.
1	E09704	Single spool cover	1
2	E09703	Single spool bracket	1
3	E10351	Single spool control	1
4	E09717	Spool lever bracket	1
5	E09718	Spool tie	1
6	E09707	Steering handle RH	1
7	E09701	Handle grip	1

Fig. 05

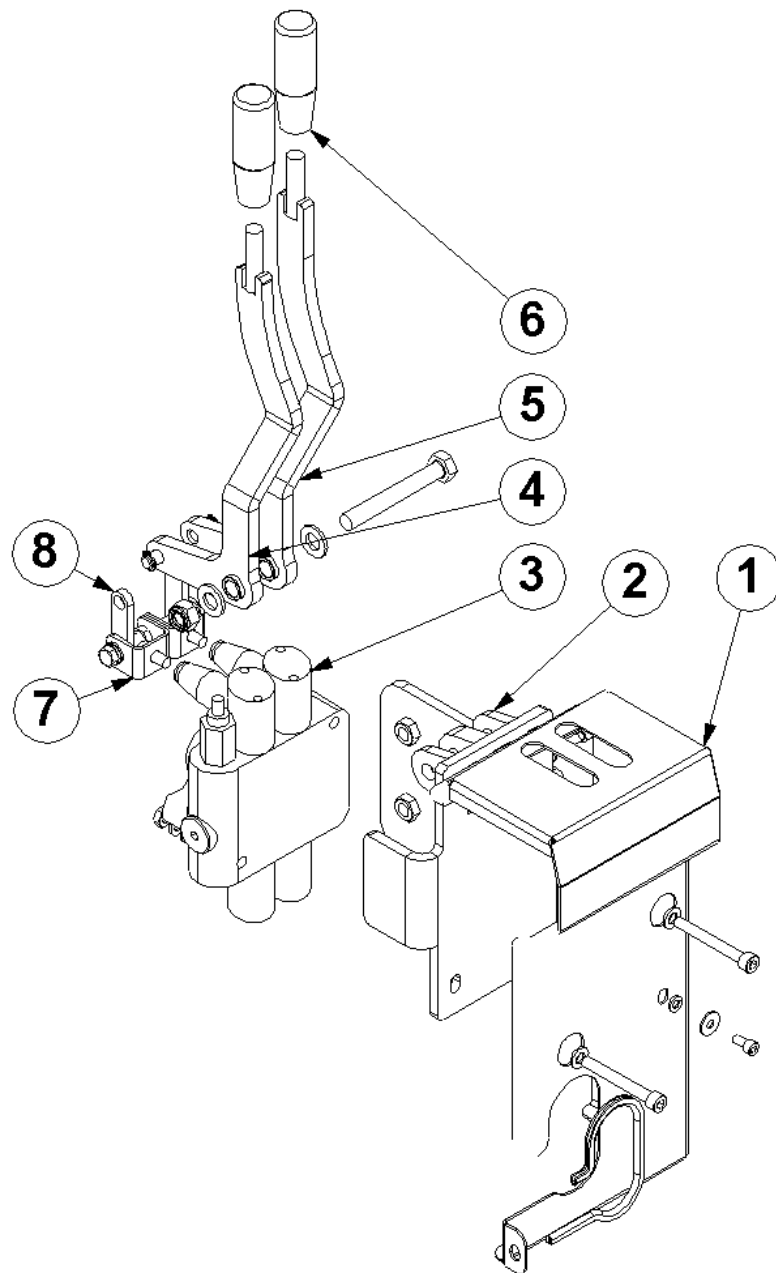


Fig. 05

Item	Part number	Description	Qty.
1	E09702	Spool cover	1
2	E08638	Double spool bracket	1
3	E10352	Double spool control	1
4	E09706	Lifting handle	1
5	E09700	Steering handle LH	1
6	E09701	Handle grip	2
7	E09717	Spool lever bracket	2
8	E09718	Spool tie	2

Fig. 06

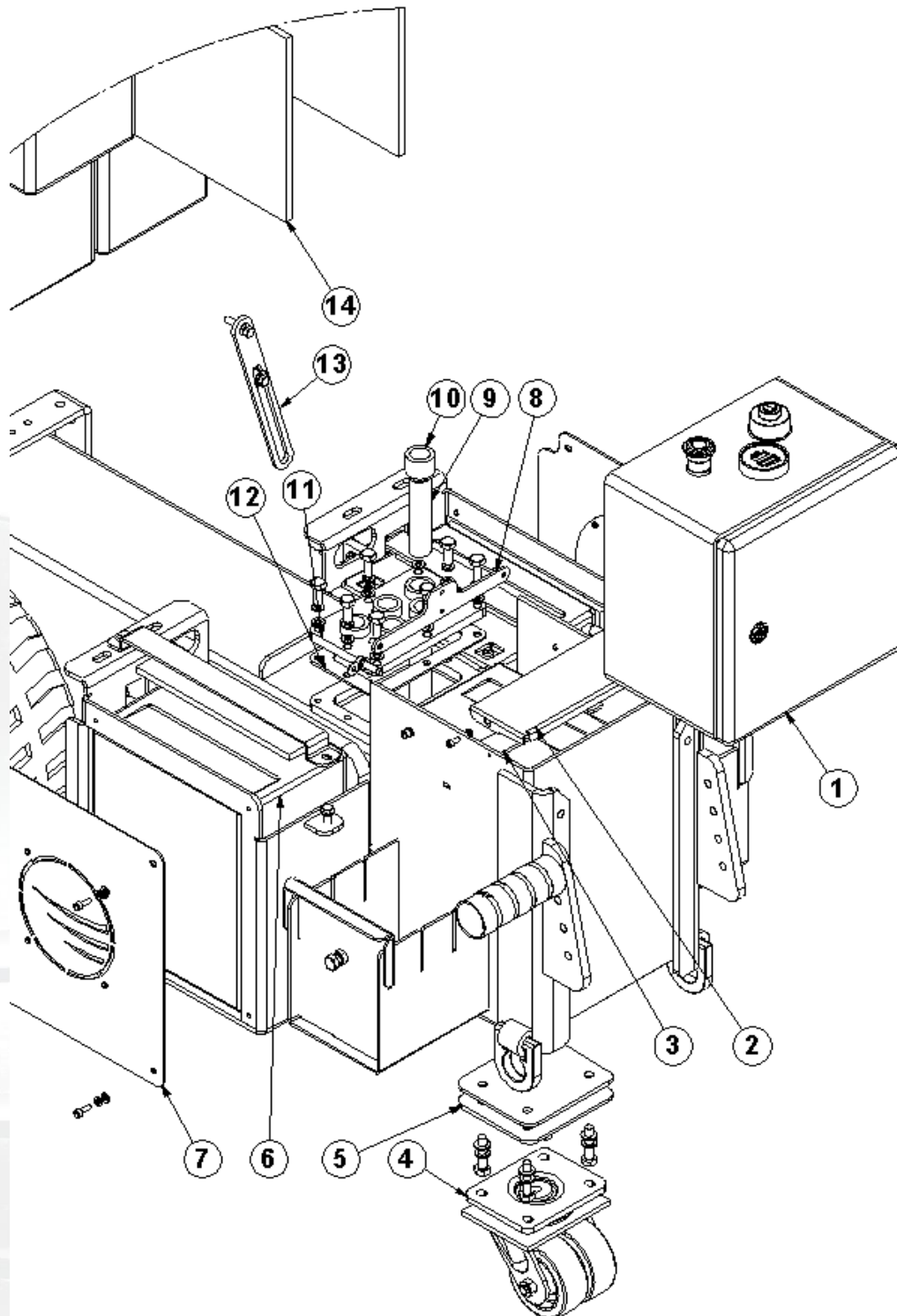
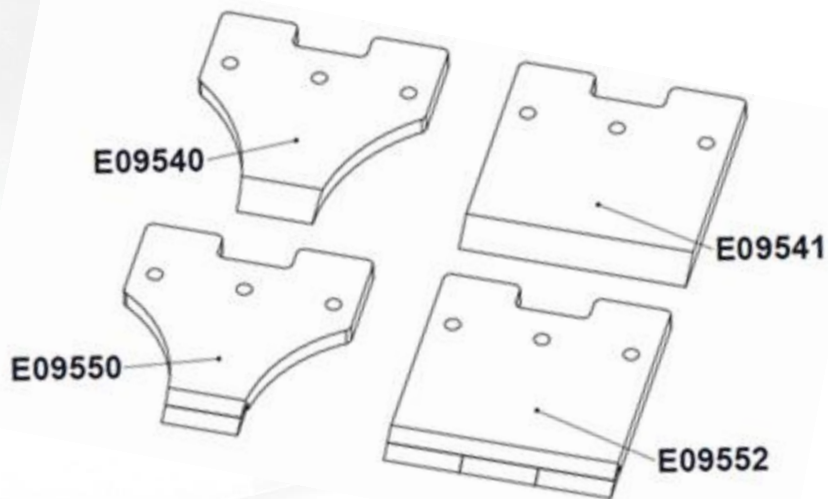
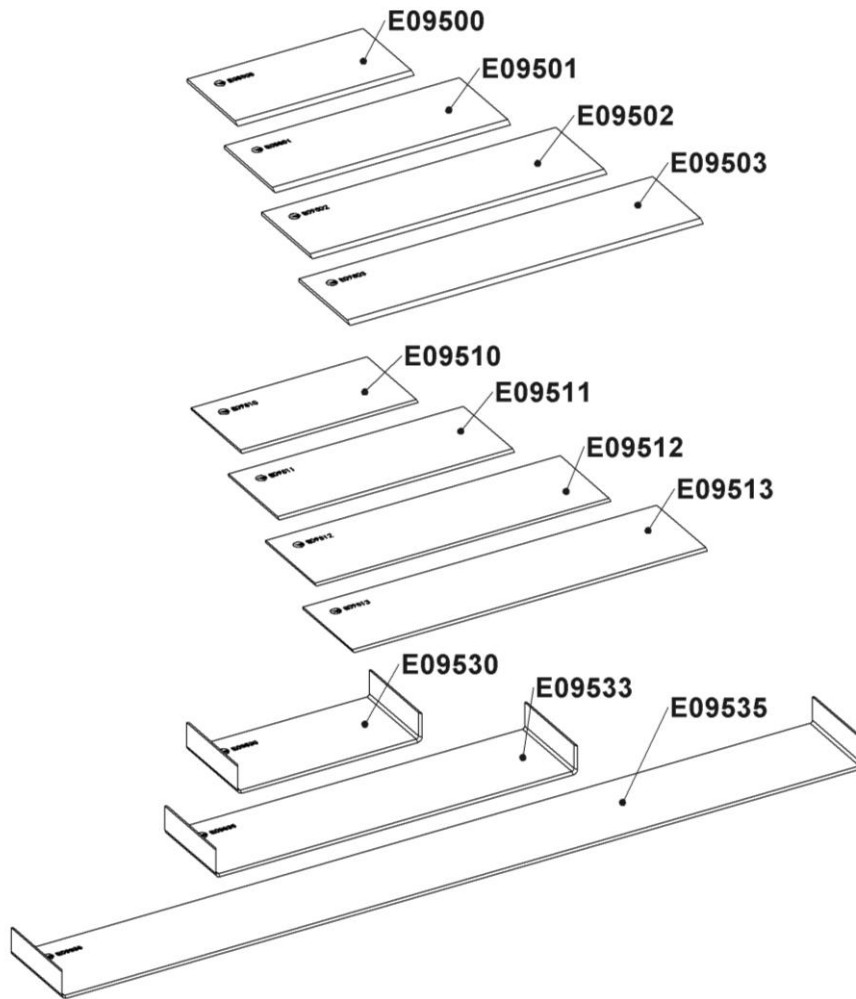


Fig. 06

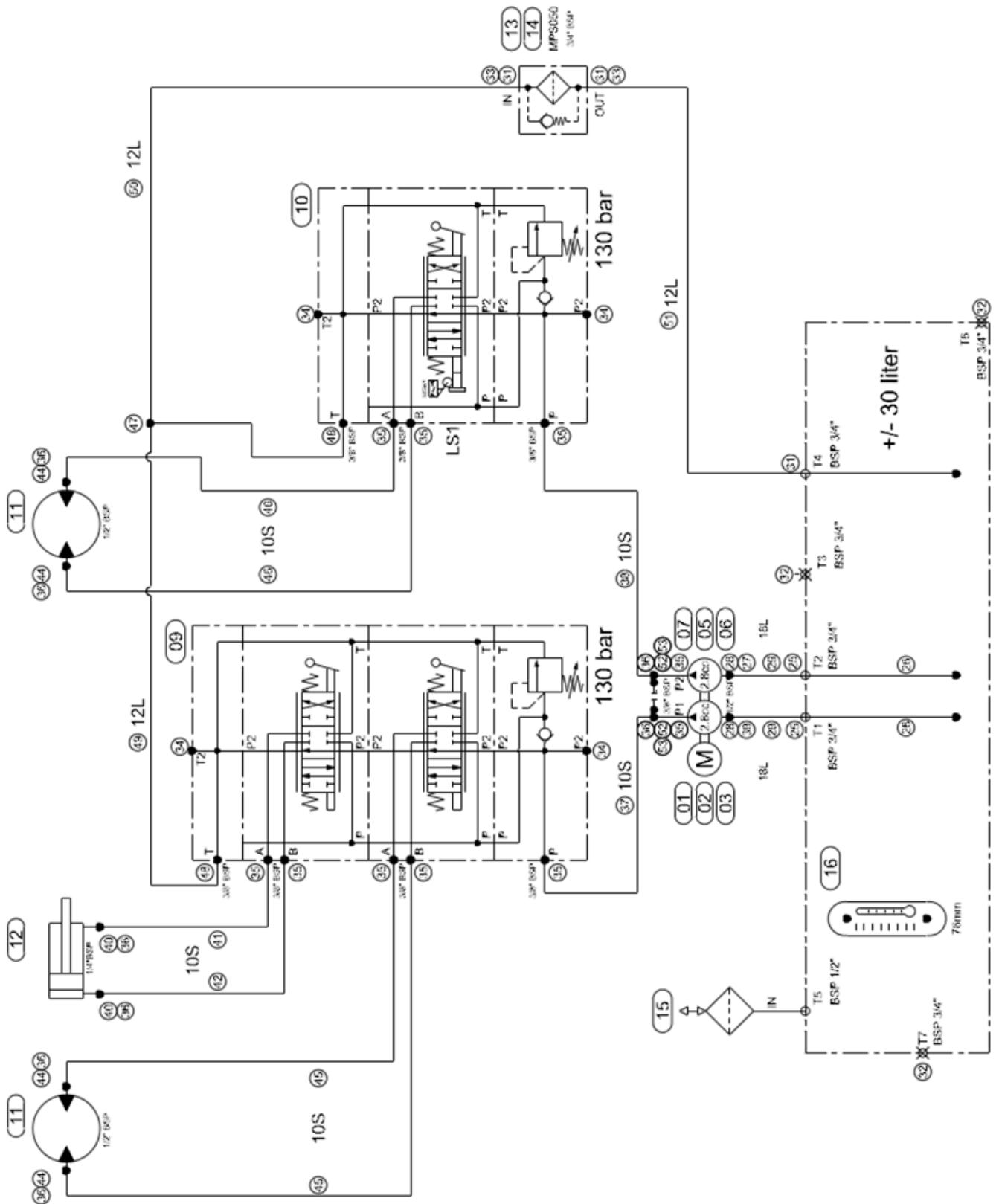
Item	Part number	Description	Qty.
1	E09376	Electro box	1
2	E08628	Front cover	1
3	E08629	Front battery tight plate	1
4	E09277	Front wheel	1
5	E09712	Wheel spacer	2
6	E09721	Battery – BMS-220	12
7	E09710	Side cover - RH	1
8	E08632	Battery hold down strip	1
9	E09837	Breather pipe	1
10	E09939	Breather mounting bush	1
11	E09705	Hose connection plate	1
12	E09172	Oil tank seal	1
13	E09838	Protection plate	1
14	E09175	Battery spacer	2





Item	Part number	Description	Qty.
	E09540	Premium chisel 51x12 (2")	1
	E09542	Premium chisel 152x12 (6")	1
	E09550	Heavy duty chisel 51x12 (2")	1
	E09552	Heavy duty chisel 152x12 (6")	1
	E09500	Heavy duty blade 152x76x2.5 (6")	1
	E09501	Heavy duty blade 203x76x2.5 (8")	1
	E09502	Heavy duty blade 254x76x2.5 (10")	1
	E09503	Heavy duty blade 305x76x2.5 (12")	1
	E09510	Premium blade 152x76x2.5 (6")	1
	E09511	Premium blade 203x76x2.5 (8")	1
	E09512	Premium blade 254x76x2.5 (10")	1
	E09513	Premium blade 305x76x2.5 (12")	1
	E09530	Self-Scoring blade 152x76x2.5 (6")	1
	E09533	Self-Scoring blade 305x76x2.5 (12")	1
	E09535	Self-Scoring blade 686x76x2.5 (27")	1

2. Hydraulic schedule



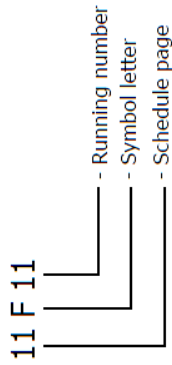


3. Electric schedule

Colour abbreviations IEC 60757

BK	Black
BN	Brown
BU	Blue
GD	Gold
GN	Green
GNYE	Green/Yellow
GY	Grey
OG	Orange
PK	Pink
RD	Red
SR	Silver
TQ	Turquoise
VT	Violet
WH	White
YE	Yellow

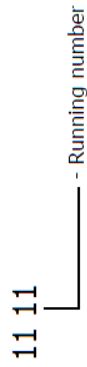
SYMBOL CODE



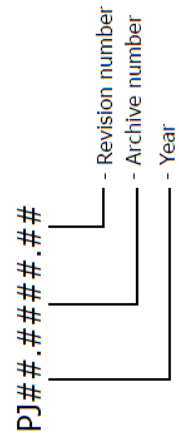
WIRE COLOR

Plus (24VDC)	-RED
Hook-up wire	--
Minus / Ground (24VDC)	BLACK

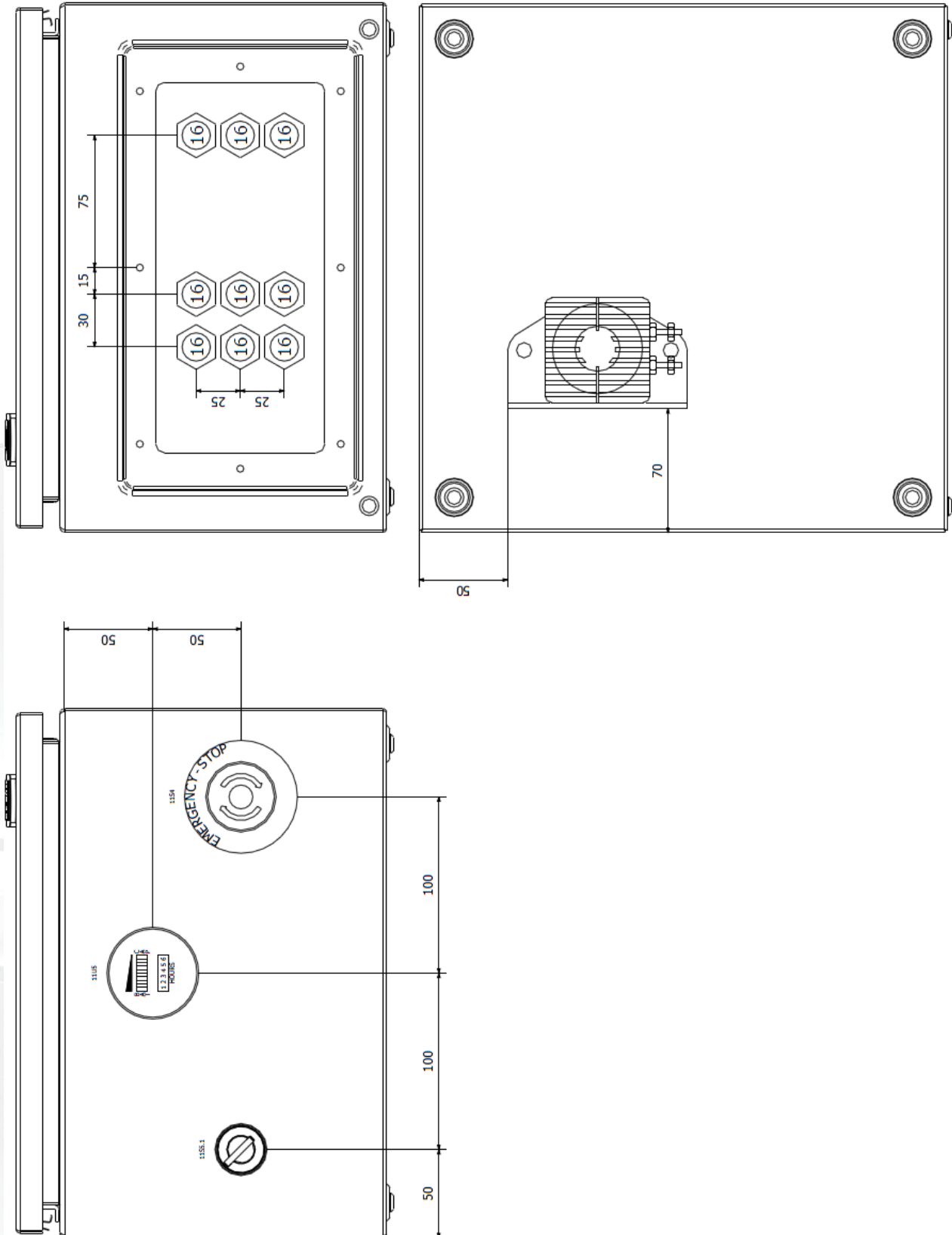
CORE CODE

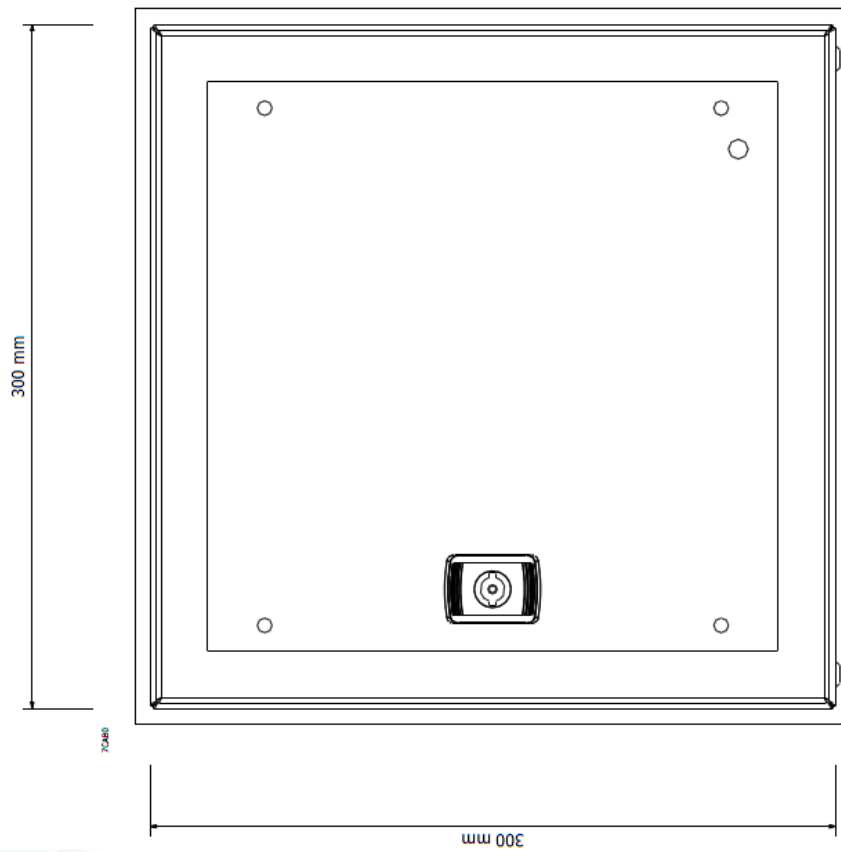
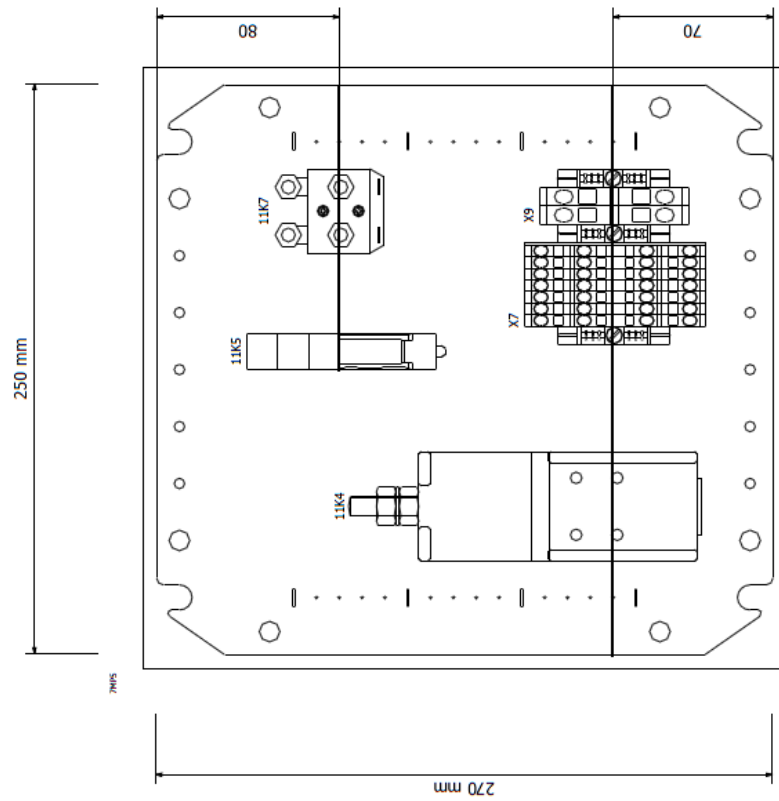


DRAWING NUMBER

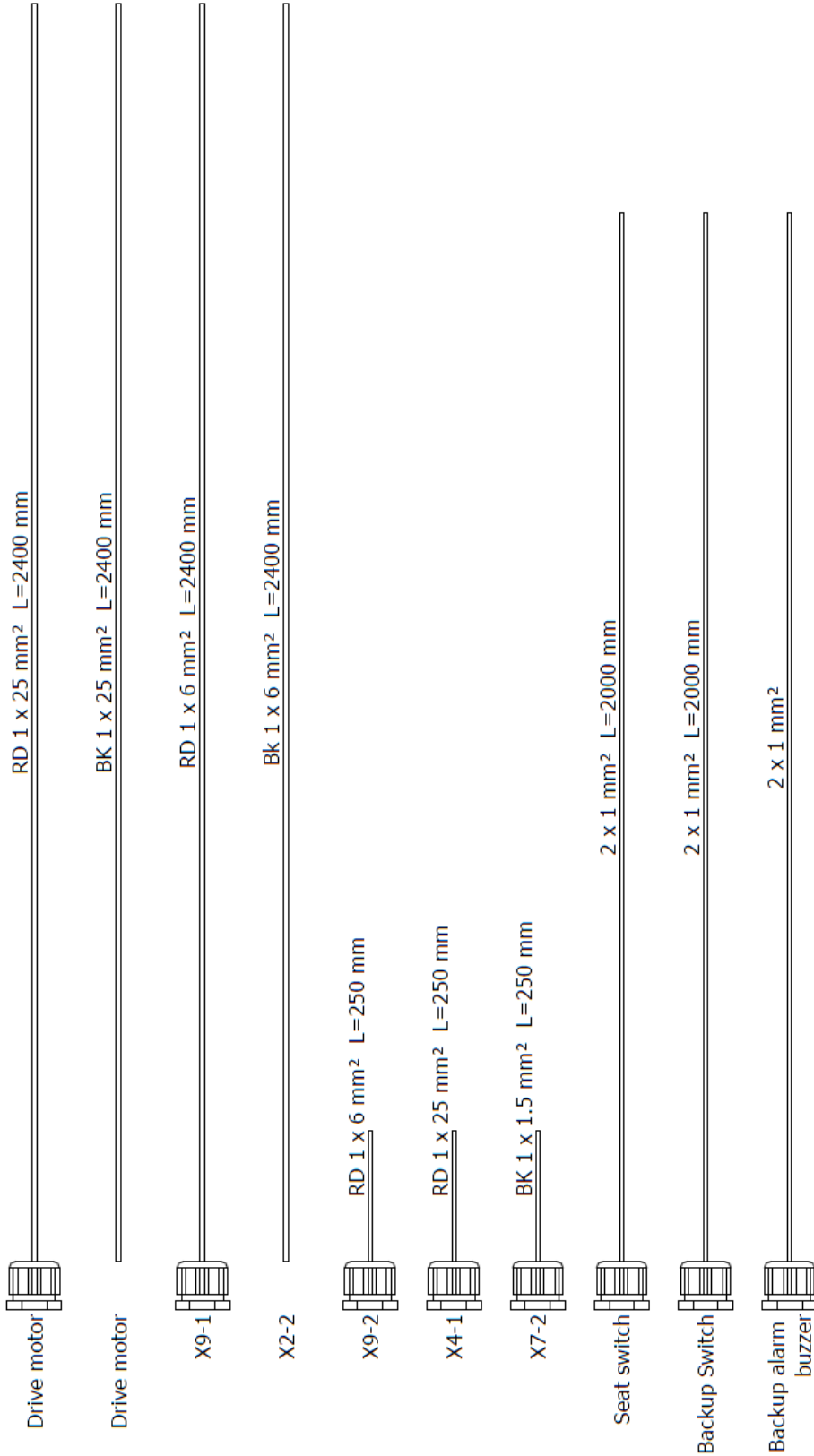


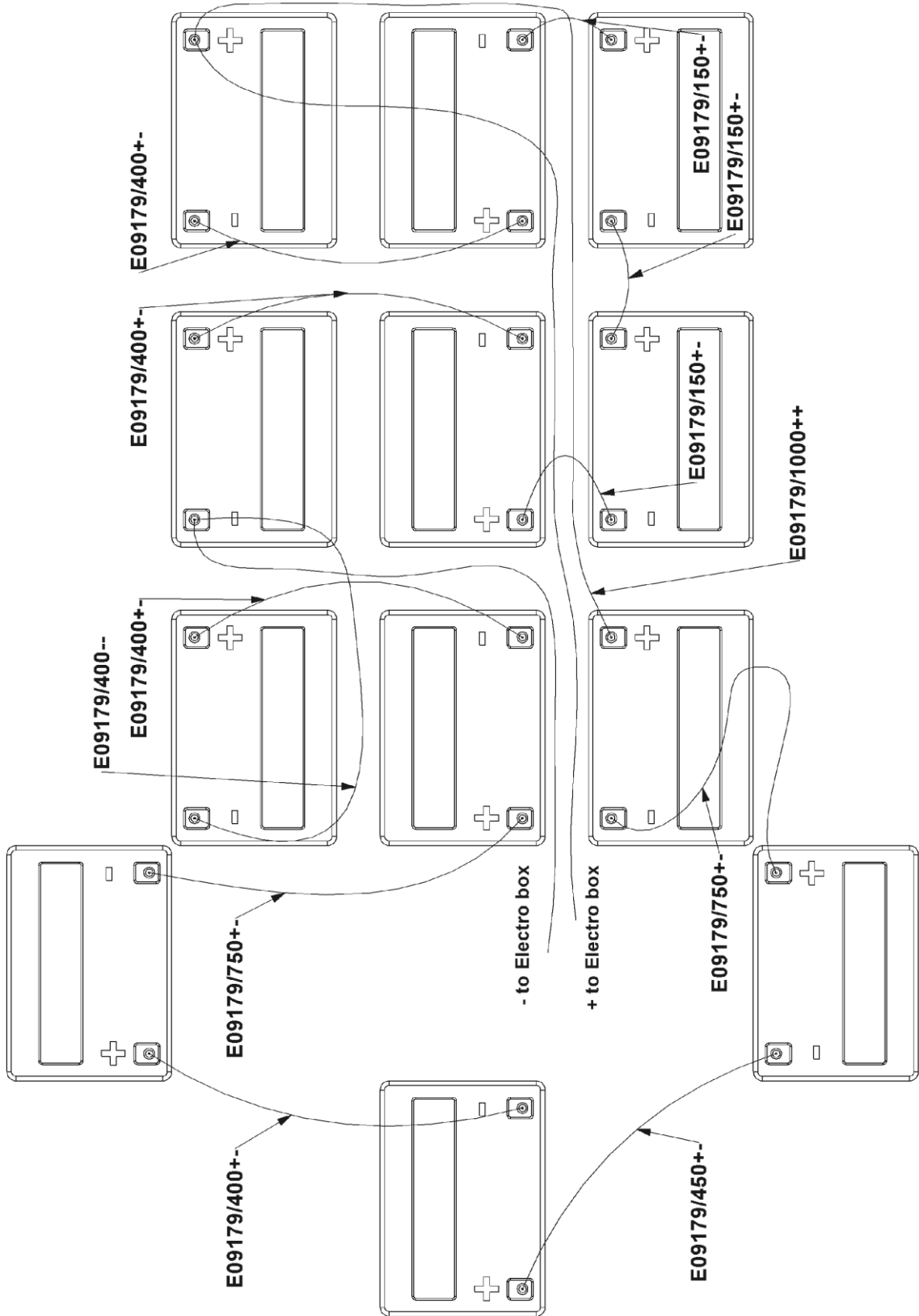
	auxiliary contact	hulpcontact		signallamp		Safety fuse	smeltveiligheid
	Power contact	vermogenscontact		hoorn		Fused switch, three-pole	schakelbare scheider
	NO contact, opens with time delay	maakcontact, vertraagd open		amp.meter		Fused disconnect, three-pole	scheider "kapbak"
	NO contact, closes with time delay	maakcontact, vertraagd sluitend		running hour counter		Main switch	hoofdschakelaar
	NC contact, opens with time delay	verbreekcontact, vertraagd open		transformer		Circuit breaker, single-pole	installatieautomaat 1-polig
	NC contact, closes with time delay	verbreekcontact, vertraagd sluitend		Contactor coil relay coil		Circuit breaker, two-pole	installatieautomaat 2-polig
	Pushbutton rebound	drukknop terugverend		Contactor/relay coil, with pick-up delay		Circuit breaker, three-pole	installatieautomaat 3-polig
	Pushbutton locking	drukknop blijvend		Contactor/relay coil, with drop-out delay		Power circuit breaker motor overload switch with switch mechanism	motorbeveiligingsschakelaar
	Rotary switch rebound	tip draaischakelaar		Contactor pulse coil relay pulse coil		Valve	elektrisch bediende klep
	Rotary switch locking	draaischakelaar		Tube light		Resistor with movable contact	regelbare weerstand
	Emergency stop rotary unlock	noodstop met draaibare vrijgave		Resistor / Heating		Terminal	rijglem
	Thermostatic switch	thermostaat hygrosuaat		Socket		Terminal with fuse	rijglem met zekering
	Pressure switch	drukschakelaar		Current transformer		Rectifier	gelijkrichter
	Limit switch	eindschakelaar					
	Proximity switch	naderingsschakelaar					
	Pull or pulcord switch	Trek of trekkoord schakelaar					

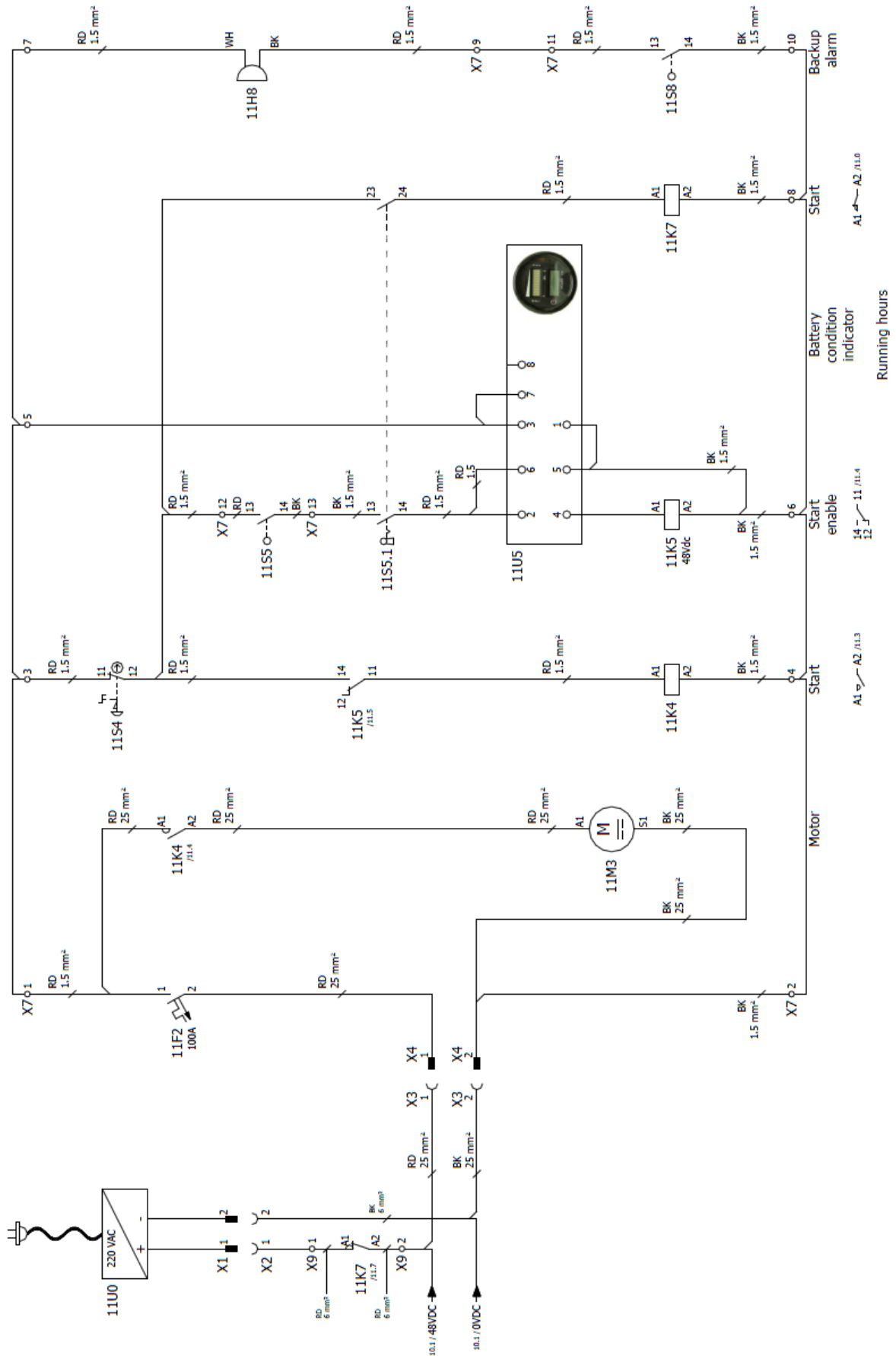




Wire / Cable length measured from cable gland









Headquarter

Blastrac The Netherlands

Utrechthaven 12
 NL – 3433 PN Nieuwegein
 Tel – 0031 30 601 88 66
 Fax – 0031 30 601 83 33
 Info@blastrac.nl

Blastrac Poland

Golina, Dworcowa 47e
 PL – 63-200 Jarocin
 Tel – 0048 627 40 41 50
 Fax – 0048 627 40 41 51
 Info@blastrac.pl

Blastrac Italy

S.S. 10 Padana Inferiore, 41
 IT – 29012 Caorso (PC)
 Tel – 0039 0523 81 42 41
 Fax – 0039 0523 81 42 45
 Info@blastrac.it

Blastrac United Kingdom

Unit 2, Outgang Lane, Dinnington
 Sheffield, South Yorkshire
 GB – S25 3QY, England
 Tel – 0044 1909 56 91 18
 Fax – 0044 1909 56 75 70
 Info@blastrac.co.uk

Blastrac Germany

Richard Byrd Straße 15
 D – 50829 Köln (Ossendorf)
 Tel – 0049 221 70 90 32 0
 Fax – 0049 221 70 90 32 22
 Info@blastrac.de

Blastrac Spain

Calle Copernico, 16
 Nave 2
 E – 28820 Coslada
 Tel – 0034 91 660 10 65
 Fax – 0034 91 672 72 11
 Info@blastrac.com.es

Blastrac France (ZI)

29, Avenue des Temps Modernes
 F – 86360 Chasseneuil du Poitou
 Tel – 0033 549 00 49 20
 Fax – 0033 549 00 49 21
 Info@blastrac.fr

Blastrac Ukraine

Nezalezhnosti 14, of. 21
 UA – 07400 Brovary
 Tel – 0038 44 222 51 28
 Fax – 0038 44 277 98 29
 Info@blastrac.com.ua