



BMS-220ADB FLOOR STRIPPER

A HEAVY DUTY FLOOR STRIPPER

The Blastrac BMS-220ADB ride-on stripper is ideally suited for medium and large sized applications with the added benefit of being battery operated for increased versatility. It is very maneuverable with a zero turn radius, non-mark tires and complete hydraulic control.

The BMS-220ADB can easily and fast remove of all kind of flooring materials, like; Hardwood parquet / ceramics / linoleum / vinyl / carpet / adhesives / glue / tiles / etc... Blastrac has designed a full range of blades and chisels, which give the opportunity to process any floor and specific application.



152MM - 690MM
(DEPENDING ON TYPE OF BLADE)



ELECTRICAL / UP TO 27 M/MIN



1515 MM | 681 MM | 1323 MM



RIDE-ON



1080 KG



SURFACE: HARDWOOD PARQUET /
CERAMICS / LINOLEUM / VINYL / CARPET
/ ADHESIVES / GLUE / TILES / ETC.



12X 8 V BATTERIES /
RUNNING TIME UP TO 10 HOURS

USER FRIENDLY

Both the push version and the ride-on version of our floor strippers are user friendly to operate and barely create any vibrations

LOW MAINTENANCE

All Blastrac floor strippers have a fast return on investment; machine components barely need replacing.

STRONG & COMPACT DESIGN

Blastrac strippers are heavy duty and strongly fabricated to create minimum downtime. All machines can easily pass through a standard doorway.

MANY APPLICATIONS

Use our floor strippers to remove hardwood parquet, ceramics, linoleum, vinyl, carpet, adhesives, glue, tiles and more.

BLADES & CHISELS

Depending on the type of flooring material you would like to remove, you can chose from a wide range of blades or chisels. Ask us for advice!

GREEN TECHNOLOGY

Our floor strippers, like any other Blastrac machine, do not use any chemicals or waste valuable drinking water.



BMS-220ADB OPTIONS



E09500

HEAVY DUTY BLADE
152 X 76 X 2.5 (6")



E09501

HEAVY DUTY BLADE
203 X 76 X 2.5 (8")



E09502

HEAVY DUTY BLADE
254 X 76 X 2.5 (10")



E09503

HEAVY DUTY BLADE
305 X 76 X 2.5 (12")



E09510

PREMIUM BLADE
152 X 76 X 1.6 (6")



E09511

PREMIUM BLADE
203 X 76 X 1.6 (8")



E09512

PREMIUM BLADE
254 X 76 X 1.6 (10")



E09513

PREMIUM BLADE
305 X 76 X 1.6 (12")



E09530

SELF-SCORING BLADE
152 X 76 X 1.5 (6")



E09533

SELF-SCORING BLADE
305 X 76 X 1.5 (12")



E09535

SELF-SCORING BLADE
685 X 76 X 1.5 (27")



E09664

SUPPORT FOR CHISEL
OR BLADE HOLDER



E09630

STRIPPER BLADE HOLDER
152 MM (6")



E09631

STRIPPER BLADE HOLDER
203 MM (8")



E09632

STRIPPER BLADE HOLDER
254 MM (10")



E09633

STRIPPER BLADE HOLDER
305 MM (12")



E09634

STRIPPER BLADE HOLDER
355 MM (14")



E09635

STRIPPER BLADE HOLDER
686 MM (27")



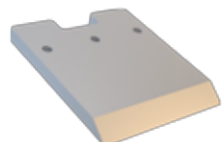
E10000/BOX

TOOLBOX (EMPTY)
E10000
TOOLBOX



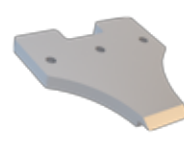
E09540

PREMIUM CHISEL 51X12 (2")



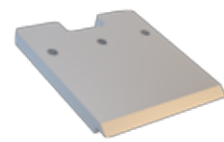
E09542

PREMIUM CHISEL 152X12 (6")



E09550

HEAVY DUTY CHISEL 51X12 (2")



E09552

HEAVY DUTY CHISEL 152X12 (6")