

Manual for Baron Mixer M200

Usage.

Baron Mixer's have been designed with the aim of mixing different types of concrete and mortar within the construction industry. The Baron Mixer's are particularly sturdy and user-friendly and are suitable for mixing quantities up to 200 litres at any time.

Warning: Never place objects or your hands in through the bottom hatch or the lattice lid, when connected to power supply.

Before starting up the Mixer.

Before starting the mixer, make sure the machine is standing freely and level

1. Check that the mixer head is located correctly and is free of stones and other objects **pos.12.**
2. Close the cover lid **pos.14** and check that the positioning bolt is correctly located **pos.17.** The mixer will start only when the cover lid is closed.
3. Make sure that the trap door **pos.3** is firmly closed by pushing in the trap door handle **pos.2.**
4. All cables and switches must be checked for damage.
5. Connect to the power supply and check that the emergency stop switch is deactivated by turning the knob to the left **pos.19** and then press the main switch **pos.18.**
6. If overloaded, the motor will be stopped by the thermal relay. Repeat procedure: **before starting up the Mixer.**

Cleaning and maintenance.

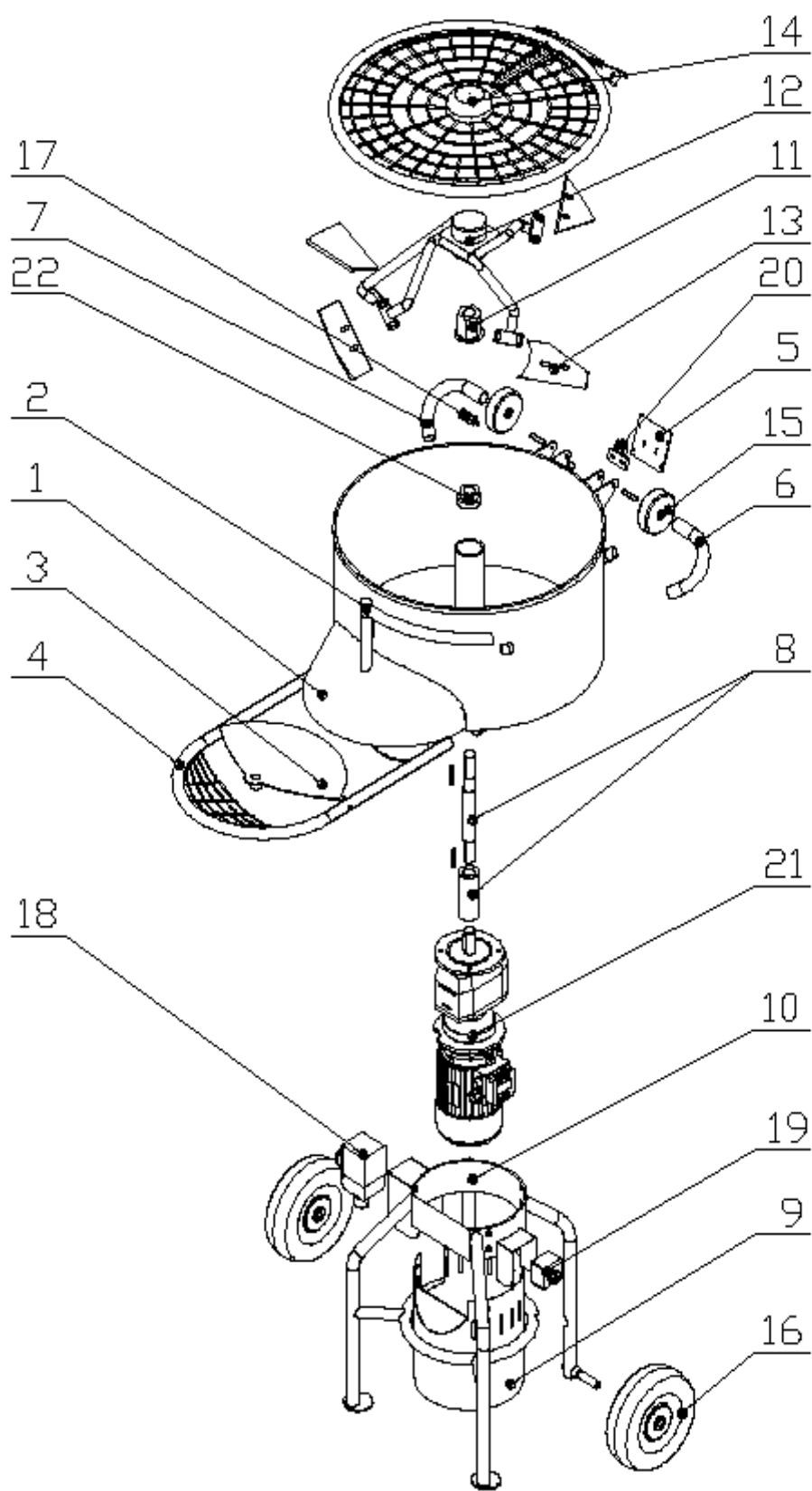
The mixer must be cleaned of dust and stones before the mortar hardens. When washing the mixer, do not pressure hose the electrical parts including the motor or directly into the driveshaft

1. Remember to unplug the power supply before cleaning.
2. Open the lid **pos.14** and the trap door **pos.2.**
3. Remove the mixer head **pos.12** by lifting it out of the driveshaft.
4. Rinse the mixer with water and move the trap door handle several times **pos.2** and outlet protection **pos.3.**
5. Before you mount the mixer head **pos.12** please check that there is no water, stone or gravel in the driveshaft.
6. Lubricating the axle for the trap door **pos.2** is done by using a grease gun connected directly to the grease nipple which is located at the side of the outlet shaft. Lubrication must be carried out once a week as a minimum or after each cleaning.

Adjusting the blades.

Adjust one arm at a time. The mixer is supplied with steel blades as standard, but can be supplied with rubber blades as an extra cost option if required.

1. Remember to unplug the power supply before adjusting the blades.
2. Open the cover lid.
3. The 2 bolts on the mixer head must be loosened **pos.12.**
4. Keep the blade approx 3mm from the side or the bottom of the container whilst tightening the 2 bolts. You could use a 3mm thick material to place underneath the blades to get the correct distance.
5. Check all positions by listening and seeing if the blades are moving around free of the container.
6. If the blades are in contact with the container, repeat above procedure **before starting up the Mixer** beginning with where the blades make contact with the container.



lp	Item	catalogue No
1	Container complete	M200.050.000
2	Trapdoor handle	M200.050.100
3	Trapdoor	M200.050.095
4	Outlet protection	M200.150.000
5	Plate for magnetic switch	M080.175.000
6	Handle left	M080.200.000
7	Handle right	M080.225.000
8	Driveshaft complete	M200.274.000
9	Engine cover	M200.325.000
10	Frame	M200.350.000
11	Drive head 6-edges diam.24	M200.425.000
12	Mixer head	M200.450.000
13	Metal shovels, 1 set complete	M200.474.000
14	Cover	M200.525.000
15	Transport roll set w.2 incl. distance piece	M080.710.000
16	Wheel	M080.720.000
17	Positioning bolt	M080.730.000
18	Main switch 230v	M200.800.000
19	Emergency switch	M080.820.000
20	End switch complete	M080.830.000
21	Motor/Gear, 2,2kW, 3x230V/380V	M200.850.000
22	Bearing	M300.900.000

Transport

It is very easy for one person to move the mixer around by using the handles **pos.6+7**.

When loading and off loading, transport rollers **pos.15** must be turned downwards to avoid damage to the mixer.

Warning: Remember to fasten the mixer during transport.

Technical data

Technical data : Baron Mixer	M 200
Container capacity	200 liter
Weight	185 kg
Width	850 mm
Depth	1.120 mm
Height	1.280 mm
Speed of rotation	30 r/min
Effect	380 V / 2,2 KW 110 V / 1, KW
Type no.	200-MAC-000

Service

Baron U.K. Limited
Unit 14
Kelvin Way Trading Estate
West Bromwich
West Midlands
B70 7TN
Tel: 0121 580 5055
Fax: 0121 580 5057
E-mail: enquiries@baronukltd.com