

COMING SOON TO THE UK FOR HIRE

POWERFAB®

**Remote Controlled
Better Operator Safety
No ROPS required**

**ELECTRIC OPTION
MEANS NO
FUMES, LESS
NOISE, STILL WITH
A FULL DAYS
WORK.**



www.powerfabexcavators.com

ME05 MINI EXCAVATOR



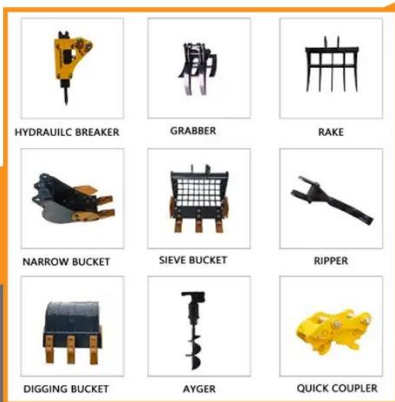
Product Parameters

Total weight	590kg
Total length	1600mm
Total width	640mm
Total height	1350mm
Maximum digging radius	2760mm
Maximum excavation depth	1200mm
Maximum excavation height	2400mm
Charging time	3.5h
Working time	8h
Voltage	72v
Engine model	LiFeP04/LiCOMnNi02
BYD:Lithium battery+BMS	148ah
Walking speed	2.2km/h
Climbing angle	30°

Performance Features

1. Instead of manual safety work in high-risk places.
2. Small size, can enter the elevator, indoor and other narrow space.
3. Low noise, no emissions, more environmentally friendly.

PROJECT	ME05
Mechine weight(KG)	680
Bucket voluem(m³)	0.02
Battery	72V,148AH
L*W*H(mm)	1600*800*1350
Chassis width(mm)	660
Maximum digging radius(mm)	2760
Maximum digging height(mm)	2400
Maximum digging depth(mm)	1200
Walking speed(km/h)	0-2.2
Swing speed(r/min)	10°/360°
Climbing angle(°)	30°
Arm swing	Left45° Right45°



📞 07899777246

✉ info@powerfabexcavators.com

Henley House, Queensway,

Fforest Fach, Swansea SA5 4DJ